

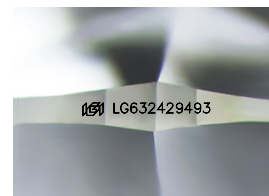
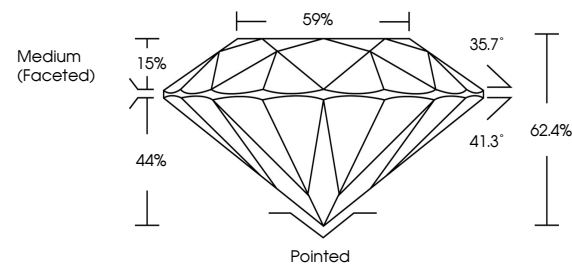


ELECTRONIC COPY

LABORATORY GROWN DIAMOND REPORT

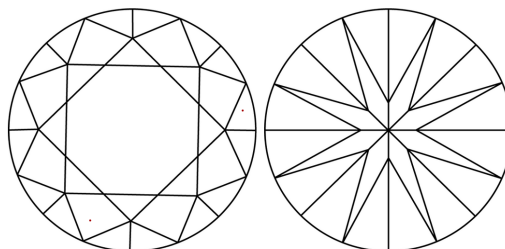
LG632429493
Report verification at igi.org

PROPORTIONS



Sample Image Used

CLARITY CHARACTERISTICS



KEY TO SYMBOLS

Red symbols indicate internal characteristics.
Green symbols indicate external characteristics.

COLOR

D E F G H I J Faint Very Light Light

CLARITY

| IF | VVS ¹⁻² | VS ¹⁻² | SI ¹⁻² | I ¹⁻³ |
|---------------------|-----------------------------|------------------------|-------------------|------------------|
| Internally Flawless | Very Very Slightly Included | Very Slightly Included | Slightly Included | Included |



© IGI 2020, International Gemological Institute

FD - 10 20

www.igi.org

DIAMOND REPORT



May 1, 2024

IGI Report Number **LG632429493**Description **LABORATORY GROWN DIAMOND**Shape and Cutting Style **ROUND BRILLIANT**

Measurements 7.38 - 7.43 X 4.62 MM

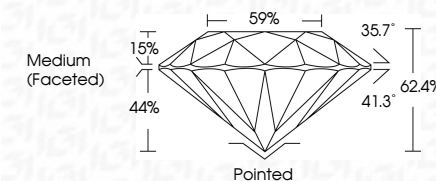
GRADING RESULTS

Carat Weight 1.56 CARAT

Color Grade

Clarity Grade WS 2

Cut Grade **IDEAL**



ADDITIONAL GRADING INFORMATION

Polish **EXCELLENT**Symmetry **EXCELLENT**Fluorescence **NONE**Inscription(s) LG632429493

Comments: This Laboratory Grown Diamond was created by Chemical Vapor Deposition (CVD) growth process and may include post-growth treatment.
Type IIa



| | |
|--|------------------|
| May 1, 2024 | |
| GJ Report No LG562529463 | |
| ROUND BRILLIANT | |
| 38 - 38 - 7.43 X 4.02 MM | 1.56 CARAT |
| Carat Weight | E |
| Color Grade | VVS 2 |
| Cut Grade | IDEAL |
| Depth | 62.4% |
| Table | 95% |
| Girdle | Medium (Faceted) |
| Culet | Polished |
| Pavil | EXCELLENT |
| Symmetry | EXCELLENT |
| Fluorescence | NONE |
| Inclusions(3) | #B1LG562529463 |
| Comments: | |
| This Laboratory Growth Diamond was created by Chemical Vapor Deposition (CVD) growth process and may include trace-growth treatment. | |