



**ELECTRONIC COPY**

## LABORATORY GROWN DIAMOND REPORT

May 5, 2024	
IGI Report Number	LG632442884
Description	LABORATORY GROWN DIAMOND
Shape and Cutting Style	ROUND BRILLIANT
Measurements	9.15 - 9.20 X 5.65 MM

## GRADING RESULTS

Carat Weight	2.93 CARATS
Color Grade	G
Clarity Grade	VS 2
Cut Grade	IDEAL

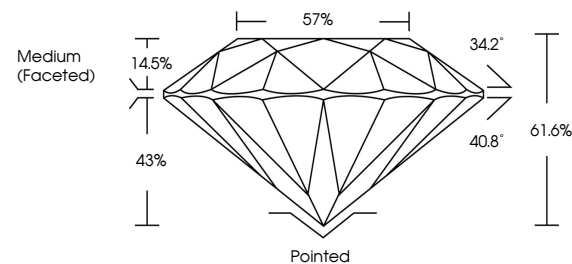
### ADDITIONAL GRADING INFORMATION

Polish	EXCELLENT
Symmetry	EXCELLENT
Fluorescence	NONE
Inscription(s)	 LG632442884

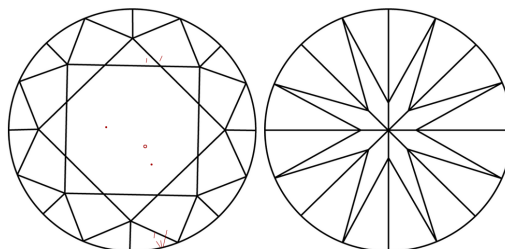
Comments: This Laboratory Grown Diamond was created by Chemical Vapor Deposition (CVD) growth process and may include post-growth treatment.  
Type IIa

LG632442884  
Report verification at [igi.org](https://igi.org)

## PROPORTIONS

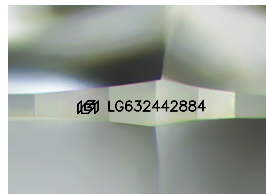


## CLARITY CHARACTERISTICS



### KEY TO SYMBOLS

Red symbols indicate internal characteristics.  
Green symbols indicate external characteristics.



Sample Image Used

**COLOR**

D E F G H I J Faint Very Light Light

## CLARITY

IF	VVS <sup>1-2</sup>	VS <sup>1-2</sup>	SI <sup>1-2</sup>	I <sup>1-3</sup>
Internally Flawless	Very Very Slightly Included	Very Slightly Included	Slightly Included	Included



© IGI 2020, International Gemological Institute

FD - 10 20

**www.igi.org**

DIAMOND REPORT



May 5, 2024

IGI Report Number **LG632442884**

Description	LABORATORY GROWN DIAMOND
-------------	--------------------------

Shape and Cutting Style **ROUND BRILLIANT**

Measurements 9.15 - 9.20 X 5.65 MM

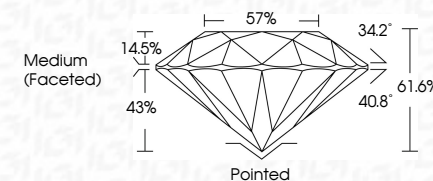
## GRADING RESULTS

Carat Weight **2.93 CARATS**

Color Grade **G**

Clarity Grade VS 2

Cut Grade **IDEAL**



### ADDITIONAL GRADING INFORMATION

Polish **EXCELLENCE**Symmetry **EXCELLEN**Fluorescence NONIInscription(s)  LG632442884

Comments: This Laboratory Grown Diamond was created by Chemical Vapor Deposition (CVD) growth process and may include post-growth treatment.  
Type IIa



<b>May 5, 2024</b>	<b>GI Report No LG63242894</b>	<b>ROUND BRILLANT</b>	<b>2.93 CARATS</b>	<b>G</b>	<b>VS 2</b>	<b>IDEAL</b>	<b>61.5%</b>	<b>57%</b>	<b>(Medium Faceted)</b>	<b>Poited</b>	<b>EXCELLENT</b>	<b>B'CELENT</b>	<b>NONE</b>	<b>1691 LG63242894</b>
<b>Color Grade</b>	<b>Clarity Grade</b>	<b>Cut Grade</b>	<b>Depth</b>	<b>Table</b>	<b>Girdle</b>	<b>Symmetry</b>	<b>Fluorescence</b>	<b>Inscriptions(s)</b>	<b>Comments:</b>					
<b>Carat Weight</b>	<b>1.15 - 2.20 X 5.65 MM</b>								<b>This is a Natural Growth Diamond was treated by Chemical Vapor Deposition (CVD) growth process and may include post-growth treatment.</b>	<b>Type IIA</b>				