



ELECTRONIC COPY

LABORATORY GROWN DIAMOND REPORT

May 3, 2024	
IGI Report Number	LG632458215
Description	LABORATORY GROWN DIAMOND
Shape and Cutting Style	ROUND BRILLIANT
Measurements	6.97 - 7.01 X 4.35 MM

GRADING RESULTS

Carat Weight	1.31 CARAT
Color Grade	E
Clarity Grade	VS 1
Cut Grade	IDEAL

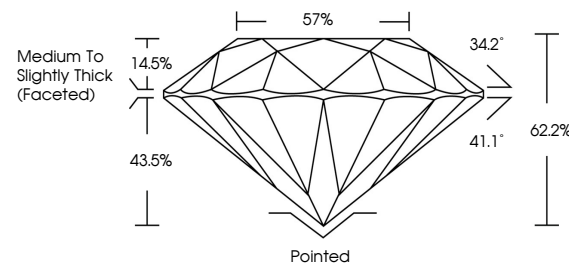
ADDITIONAL GRADING INFORMATION

Polish	EXCELLENT
Symmetry	EXCELLENT
Fluorescence	NONE
Inscription(s)	 LG632458215

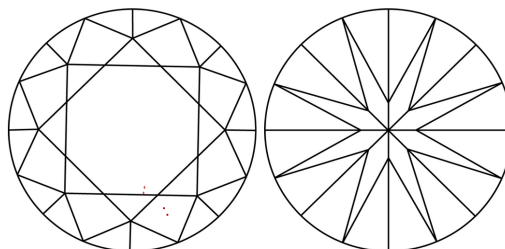
Comments: This Laboratory Grown Diamond was created by Chemical Vapor Deposition (CVD) growth process and may include post-growth treatment.
Type IIa

LG632458215
Report verification at igi.org

PROPORTIONS

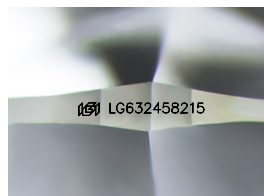


CLARITY CHARACTERISTICS



KEY TO SYMBOLS

Red symbols indicate internal characteristics.
Green symbols indicate external characteristics.



Sample Image Used

COLOR

D E F G H I J Faint Very Light Light

CLARITY

IF	VVS ¹⁻²	VS ¹⁻²	SI ¹⁻²	I ¹⁻³
Internally Flawless	Very Very Slightly Included	Very Slightly Included	Slightly Included	Included



© IGI 2020, International Gemological Institute

FD - 10 20

www.igi.org

DIAMOND REPORT



May 3, 2024

IGI Report Number **LG632458215**Description **LABORATORY GROWN DIAMOND**Shape and Cutting Style **ROUND BRILLIANT**

Measurements 6.97 - 7.01 X 4.35 MM

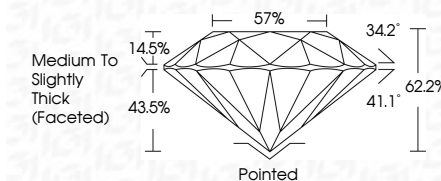
GRADING RESULTS

Carat Weight 1.31 CARAT

Color Grade **E**

Clarity Grade VS 1

Cut Grade **IDEAL**



ADDITIONAL GRADING INFORMATION

Polish **EXCELLENT**Symmetry **EXCELLENT**Fluorescence **NONE**Inscription(s) LG632458215

Comments: This Laboratory Grown Diamond was created by Chemical Vapor Deposition (CVD) growth process and may include post-growth treatment.
Type IIa



May 3, 2024	Report No LG52469215	1.31 CARAT
ROUND BRILLIANT		
G	E	
S7 - 7.01 X 4.35 MM	VS 1	
Color Weight	IDEAL	
Color Grade	62.2%	
Clarity Grade	57%	
Cut Grade	Medium to Slightly Thick (Faceted)	
Depth		Poished
Table		EXCELLENT
Girdle		EXCELLENT
		NONE
		(8) LG52469215

Comments:
This Laboratory Grown Diamond was created by Chemical Vapor Deposition (CVD) growth process and may include trace-growth treatment.