

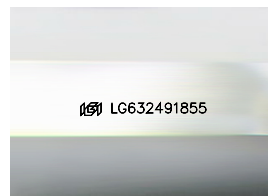
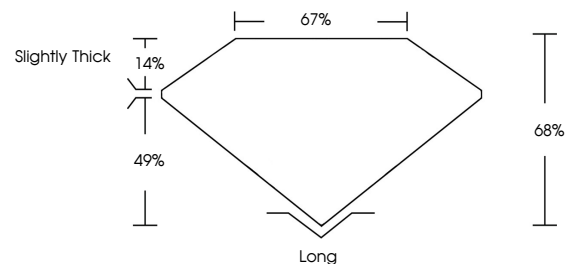


ELECTRONIC COPY

LABORATORY GROWN DIAMOND REPORT

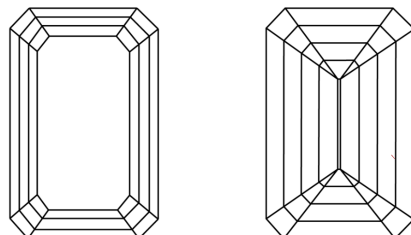
LG632491855
Report verification at lgi.org

PROPORTIONS



Sample Image Used

CLARITY CHARACTERISTICS



KEY TO SYMBOLS

Red symbols indicate internal characteristics.
Green symbols indicate external characteristics.

COLOR

D E F G H I J Faint Very Light Light

CLARITY

IF	VVS ¹⁻²	VS ¹⁻²	SI ¹⁻²	I ¹⁻³
Internally Flawless	Very Very Slightly Included	Very Slightly Included	Slightly Included	Included



© IGI 2020, International Gemological Institute

FD - 10 20

www.igi.org

DIAMOND REPORT



April 30, 2024

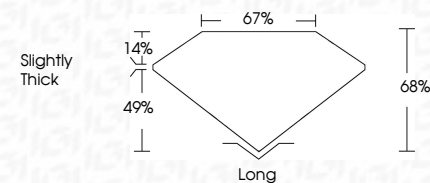
IGI Report Number **LG632491855**Description **LABORATORY GROWN DIAMOND**Shape and Cutting Style **EMERALD CUT**

Measurements **7.95 X 5.47 X 3.72 MM**

GRADING RESULTS

Carat Weight **1.61 CARAT**

Color Grade F

Clarity Grade **VVS 2**

ADDITIONAL GRADING INFORMATION

Polish **EXCELLENT**Symmetry **EXCELLENT**

Fluorescence NONI

Inscription(s) LG632491855

Comments: This Laboratory Grown Diamond was created by Chemical Vapor Deposition (CVD) growth process and may include post-growth treatment.
Type IIa



IG

April 30, 2024
 GFI Report No LG632491855

7.96 X 5.47 X 3.72 MM	1.61 CARAT
Carat Weight	F
Color Grade	VVS 2
Clarity Grade	68%
Depth	67%
Table	Slightly Thick
Girdle	Long
Culet	EXCELLENT
Polish	EXCELLENT
Symmetry	NONE
Fluorescence	None
Comments(1)	cert. CAS-90401-BES

Comments:
This Laboratory Grown Diamond was created by Chemical Vapor Deposition (CVD) growth process and may include post-growth treatment.