



**ELECTRONIC COPY**

## LABORATORY GROWN DIAMOND REPORT

May 8, 2024	
IGI Report Number	LG632499454
Description	LABORATORY GROWN DIAMOND
Shape and Cutting Style	CUSHION MODIFIED BRILLIANT
Measurements	9.59 X 6.53 X 4.64 MM

## GRADING RESULTS

Carat Weight	2.61 CARATS
Color Grade	FANCY VIVID BLUE
Clarity Grade	VS 1

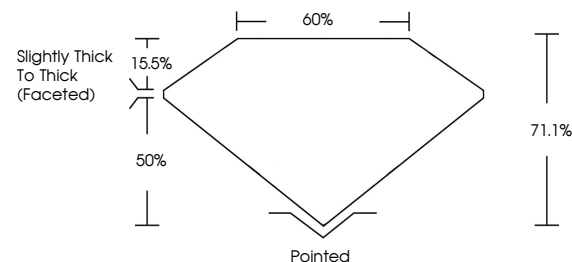
### ADDITIONAL GRADING INFORMATION

Polish	EXCELLENT
Symmetry	EXCELLENT
Fluorescence	NONE
Inscription(s)	151 LG632499454

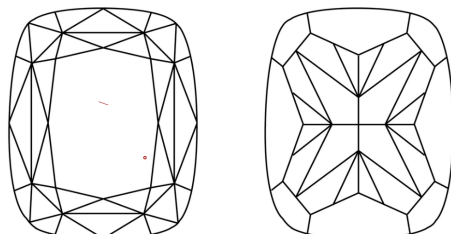
Comments: This Laboratory Grown Diamond was created by Chemical Vapor Deposition (CVD) growth process.  
Indications of post-growth treatment.

LG632499454  
Report verification at [lgi.org](https://lgi.org)

## PROPORTIONS

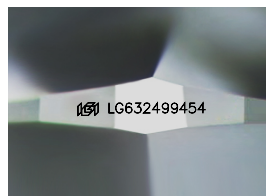


## CLARITY CHARACTERISTICS



## KEY TO SYMBOLS

Red symbols indicate internal characteristics.  
Green symbols indicate external characteristics.



Sample Image Used

## COLOR

D E F G H I J Faint Very Light Light

## CLARITY

IF	VVS <sup>1,2</sup>	VS <sup>1,2</sup>	SI <sup>1,2</sup>	I <sup>1,3</sup>
Internally Flawless	Very Very Slightly Included	Very Slightly Included	Slightly Included	Included



© IGI 2020, International Gemological Institute

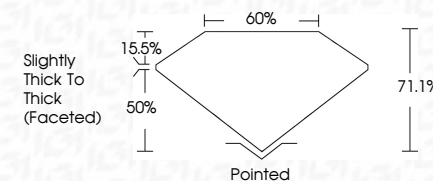
FD - 10 20

**www.igi.org**

## DIAMOND REPORT



May 8, 2024	
IGI Report Number	LG632499454
Description	LABORATORY GROWN DIAMOND
Shape and Cutting Style	CUSHION MODIFIED BRILLIANT
Measurements	9.59 X 6.53 X 4.64 MM
GRADING RESULTS	
Carat Weight	2.61 CARATS
Color Grade	FANCY VIVID BLUE
Clarity Grade	VS 1



### ADDITIONAL GRADING INFORMATION

Polish	EXCELLENT
Symmetry	EXCELLENT
Fluorescence	NONE
Inscription(s)	16 LG632499454

Comments: This Laboratory Grown Diamond was created by Chemical Vapor Deposition (CVD) growth process.  
Indications of post-growth treatment.



May 8, 2024	GI Report No	CUSHION MOD
2.99 X 6.53 X 4	Carat Weight	
	Color Grade	
	Clarity Grade	
	Depth	
	Table	
	Girdle	
	Culet	
	Polish	
	Symmetry	
	Fluorescence	
	Inscriptions(s)	

**Comments:**  
This Laboratory Grown Diamond was created by Chemical Vapor Deposition (CVD) growth process.  
indications of post-growth treatment