



**INTERNATIONAL
GEMOLOGICAL
INSTITUTE**

ELECTRONIC COPY

LABORATORY GROWN DIAMOND REPORT

May 13, 2024	
IGI Report Number	LG633404644
Description	LABORATORY GROWN DIAMOND
Shape and Cutting Style	ROUND BRILLIANT
Measurements	6.70 - 6.76 X 4.13 MM

GRADING RESULTS

Carat Weight	1.17 CARAT
Color Grade	D
Clarity Grade	VS 1
Cut Grade	IDEAL

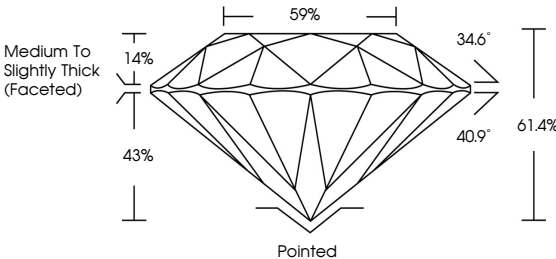
ADDITIONAL GRADING INFORMATION

Polish	EXCELLENT
Symmetry	EXCELLENT
Fluorescence	NONE
Inscription(s)	 LG633404644

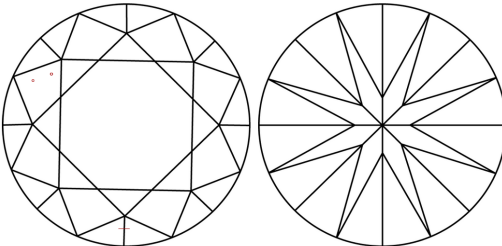
Comments: This Laboratory Grown Diamond was created by Chemical Vapor Deposition (CVD) growth process and may include post-growth treatment.
Type IIa

LG633404644
Report verification at igi.org

PROPORTIONS

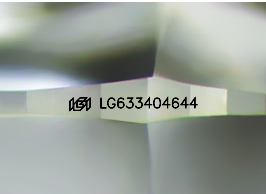


CLARITY CHARACTERISTICS



KEY TO SYMBOLS

Red symbols indicate internal characteristics.
Green symbols indicate external characteristics.



Sample Image Used

COLOR

D E F G H I J Faint Very Light Light

CLARITY

IF	WVS ¹⁻²	VS ¹⁻²	SI ¹⁻²	I ¹⁻³
Internally Flawless	Very Very Slightly Included	Very Slightly Included	Slightly Included	Included



© IGI 2020, International Gemological Institute

FD - 10 20

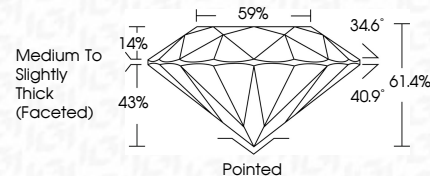
DIAMOND REPORT




May 13, 2024	
IGI Report Number	LG633404644
Description	LABORATORY GROWN DIAMOND
Shape and Cutting Style	ROUND BRILLIANT
Measurements	6.70 - 6.76 X 4.13 MM

GRADING RESULTS

Carat Weight	1.17 CARAT
Color Grade	D
Clarity Grade	VS 1
Cut Grade	IDEAL



ADDITIONAL GRADING INFORMATION

Polish	EXCELLENT
Symmetry	EXCELLENT
Fluorescence	NONE
Inscription(s)	 LG63340464
Comments: This Laboratory Grown Diamond was created by Chemical Vapor Deposition (CVD) growth process and may include post-growth treatment.	
Type IIa	



IGI

May 13, 2024	IGI Report No. USG304644
ROUND BRILLIANT	
4.76 - 4.76 x 4.13 MM	1.17 CARAT
Color Grade	D
Clarity Grade	VS 1
Cut Grade	IDEAL
Depth	61.4%
Table	59%
Girdle	Medium To Slightly Thick (Featured)
Polish	Polished
Culet	EXCELLENT
Symmetry	EXCELLENT
Fluorescence	NONE
Inscriptions	IGI USG304644
Comments:	
This Laboratory Grown Diamond was created by Chemical Vapor Deposition (CVD) growth process and may include post-growth treatment.	
Type Ia	