

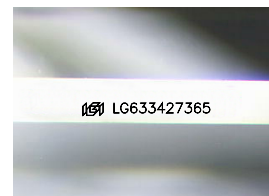
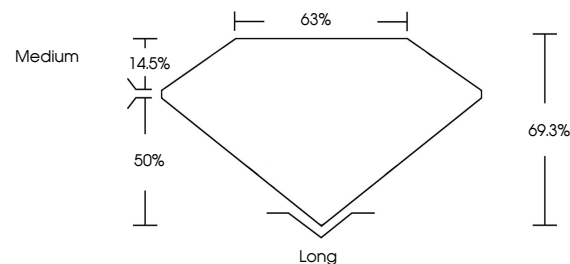


**ELECTRONIC COPY**

## LABORATORY GROWN DIAMOND REPORT

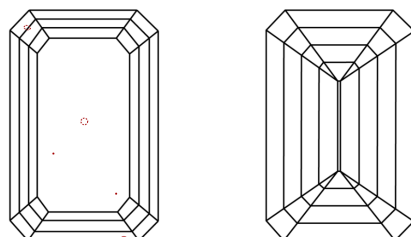
LG633427365  
Report verification at [igi.org](https://igi.org)

## PROPORTIONS



Sample Image Used

## CLARITY CHARACTERISTICS



### KEY TO SYMBOLS

Red symbols indicate internal characteristics.  
Green symbols indicate external characteristics.

## COLOR

D E F G H I J Faint Very Light Light

## CLARITY

IF	VVS <sup>1-2</sup>	VS <sup>1-2</sup>	SI <sup>1-2</sup>	I <sup>1-3</sup>
Internally Flawless	Very Very Slightly Included	Very Slightly Included	Slightly Included	Included



© IGI 2020, International Gemological Institute

FD - 10 20

**www.igi.org**

## DIAMOND REPORT



May 15, 2024

IGI Report Number **LG633427365**Description **LABORATORY GROWN DIAMOND**

Shape and Cutting Style **EMERALD CUT**

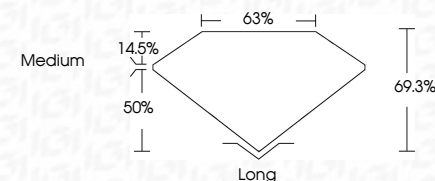
Measurements **9.71 X 6.71 X 4.65 MM**

## GRADING RESULTS

Carat Weight **3.02 CARATS**

Color Grade	H
-------------	---

Clarity Grade VS 1



### ADDITIONAL GRADING INFORMATION

Polish **EXCELLENT**Symmetry **EXCELLENT**Fluorescence **NONE**Inscription(s)  LG633427365

Comments: This Laboratory Grown Diamond was created by Chemical Vapor Deposition (CVD) growth process and may include post-growth treatment.  
Type IIa



May 15, 2024  
GI Report No LG633427365  
EMERALD CITT

3.02 CARATS	H	VS 1	66.8%	65%	Medium	Long	EXCELLENT	EXCELLENT	NONE	see ICA5027945
0.71 X 4.71 X 4.65 MM	Color Grade	Clarity Grade	Depth	Table	Girdle	Quilt	Polish	Symmetry	Fluorescence	Inscriptions(s)

**Comments:**  
This Laboratory Grown Diamond was created by Chemical Vapor Deposition (CVD) growth process and may include post-growth treatment.  
Type IIa