



ELECTRONIC COPY

LABORATORY GROWN DIAMOND REPORT

May 2, 2024	
IGI Report Number	LG633491852
Description	LABORATORY GROWN DIAMOND
Shape and Cutting Style	ROUND BRILLIANT
Measurements	6.88 - 6.92 X 4.17 MM

GRADING RESULTS

Carat Weight	1.22 CARAT
Color Grade	E
Clarity Grade	VS 1
Cut Grade	IDEAL

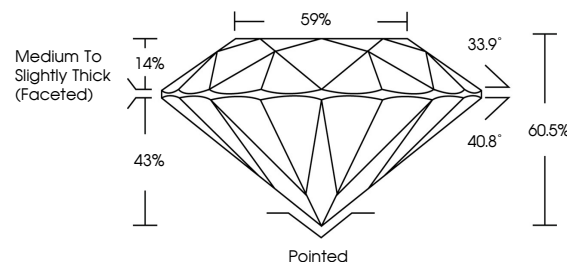
ADDITIONAL GRADING INFORMATION

Polish	EXCELLENT
Symmetry	EXCELLENT
Fluorescence	NONE
Inscription(s)	15 LG633491852

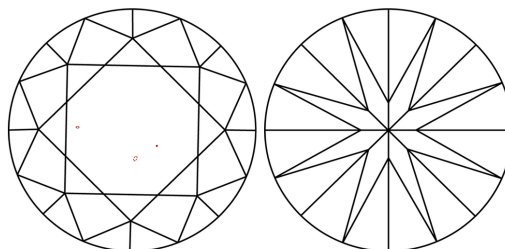
Comments: This Laboratory Grown Diamond was created by Chemical Vapor Deposition (CVD) growth process and may include post-growth treatment.
Type IIa

LG633491852
Report verification at lgi.org

PROPORTIONS

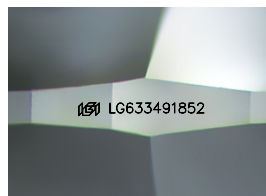


CLARITY CHARACTERISTICS



KEY TO SYMBOLS

Red symbols indicate internal characteristics.
Green symbols indicate external characteristics.



Sample Image Used

COLOR

D E F G H I J Faint Very Light Light

CLARITY

IF	VVS ¹⁻²	VS ¹⁻²	SI ¹⁻²	I ¹⁻³
Internally Flawless	Very Very Slightly Included	Very Slightly Included	Slightly Included	Included



© IGI 2020, International Gemological Institute

FD - 10 20

www.igi.org

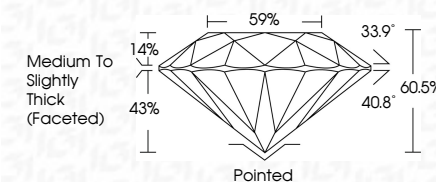
DIAMOND REPORT



May 2, 2024	
IGI Report Number	LG633491852
Description	LABORATORY GROWN DIAMOND
Shape and Cutting Style	ROUND BRILLIANT
Measurements	6.88 - 6.92 X 4.17 MM

GRADING RESULTS

Carat Weight	1.22 CARAT
Color Grade	E
Clarity Grade	VS 1
Cut Grade	IDEAL



ADDITIONAL GRADING INFORMATION

Polish	EXCELLENT
Symmetry	EXCELLENT
Fluorescence	NONE
Inscription(s)	103 LG 63349185

Comments: This Laboratory Grown Diamond was created by Chemical Vapor Deposition (CVD) growth process and may include post-growth treatment.
Type IIa



IG

May 2, 2024	Report No LG533971852	1.22 CARAT
ROUND BRILLIANT		
LN 689 - 4.92 X 4.17 MM		
Carat Weight		VSI
Color Grade		IDEAL
		60.5%
		57%
		Medium to slightly thick faceted
		Pointed
		EXCELLENT
		EXCELLENT
		NONE
		LN LG533971852
Comments:		
This Laboratory Grown Diamond was created by Chemical Vapor Deposition (CVD) growth process and may include trace growth treatment.		