



ELECTRONIC COPY

LABORATORY GROWN DIAMOND REPORT

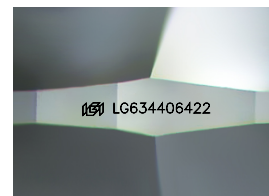
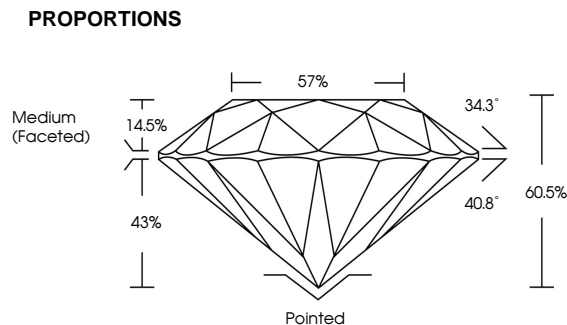
LG634406422
Report verification at igi.org

May 14, 2024	
IGI Report Number	LG634406422
Description	LABORATORY GROWN DIAMOND
Shape and Cutting Style	ROUND BRILLIANT
Measurements	7.17 - 7.20 X 4.35 MM
GRADING RESULTS	
Carat Weight	1.36 CARAT
Color Grade	E
Clarity Grade	VVS 2
Cut Grade	IDEAL

ADDITIONAL GRADING INFORMATION

Polish	EXCELLENT
Symmetry	EXCELLENT
Fluorescence	NONE
Inscription(s)	 LG634406422

Comments: HEARTS & ARROWS
This Laboratory Grown Diamond was created by
Chemical Vapor Deposition (CVD) growth process and
may include post-growth treatment.
Type IIa



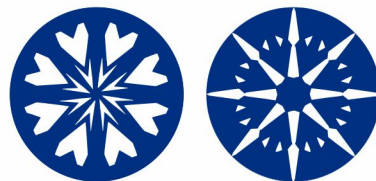
Sample Image Used

COLOR

D E F G H I J Faint Very Light Light

CLARITY

IF	VVS ¹⁻²	VS ¹⁻²	SI ¹⁻²	I ¹⁻³
Internally Flawless	Very Very Slightly Included	Very Slightly Included	Slightly Included	Included

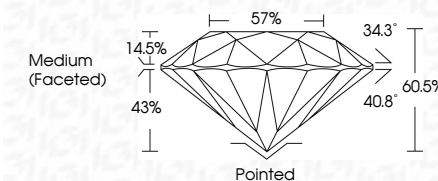


www.igi.org

DIAMOND REPORT



May 14, 2024	
IGI Report Number	LG634406422
Description	LABORATORY GROWN DIAMOND
Shape and Cutting Style	ROUND BRILLIANT
Measurements	7.17 - 7.20 X 4.35 MM
GRADING RESULTS	
Carat Weight	1.36 CARAT
Color Grade	E
Clarity Grade	VVS 2
Cut Grade	IDEAL



ADDITIONAL GRADING INFORMATION

Polish	EXCELLENT
Symmetry	EXCELLENT
Fluorescence	NONE
Inscription(s)	 LG634406422
Comments: HEARTS & ARROWS	
This Laboratory Grown Diamond was created by Chemical Vapor Deposition (CVD) growth process and may include post-growth treatment.	
Type IIA	



© IGI 2020, International Gemological Institute

FD - 10 20



THIS DOCUMENT WAS PRODUCED WITH THE FOLLOWING SECURITY MEASURES: SPECIAL DOCUMENT PAPER, INK SCREENS, WATERMARK, BACKGROUND DESIGNS, HOLOGRAM AND OTHER SECURITY FEATURES NOT LISTED AND DO EXCEED DOCUMENT SECURITY INDUSTRY GUIDELINE

May 14, 2024
IGI Report No LG634406422

IGI Report No LG63
POUND BRILLIANT

ROUND BRILLIANT

1.17 - 1.20 X 4.35 MM	1.36 CARAT
Carat Weight	

Color Grade

Clarity Grade

VS2

Depth	Cut Grade	IDEAL
40-50%		

Depict	60.6%
Table	57%

Girdle

100

Cuier	Painted
Polish	EXCELLENT

Symmetry

Fluorescence	NONE
Inscription(s)	1881 G-634476422

[illegible]

Comments:
HEARTS & ARROWS

This Laboratory Grown Diamond was created by Chemical Vapor Deposition

(CVD) growth process and may include post-growth treatment.

Type IIa