



ELECTRONIC COPY

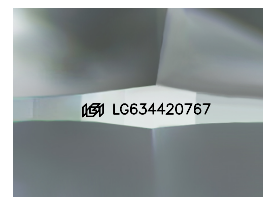
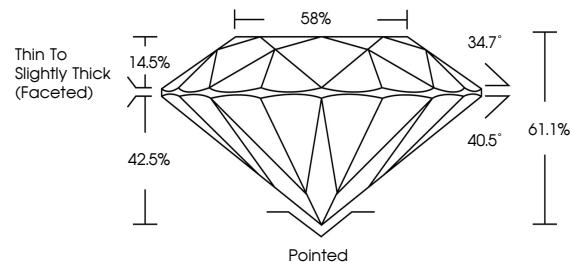
LG634420767 Report verification at igi.org



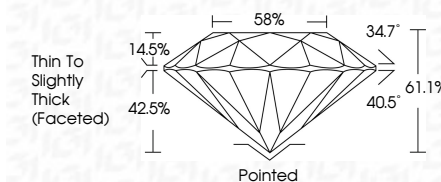
May 19, 2024
IGI Report Number LG634420767
Description LABORATORY GROWN DIAMOND
Shape and Cutting Style ROUND BRILLIANT
Measurements 9.12 - 9.19 X 5.59 MM
GRADING RESULTS
Carat Weight 2.91 CARATS
Color Grade F
Clarity Grade VVS 2
Cut Grade IDEAL

May 19, 2024
IGI Report Number LG634420767
Description LABORATORY GROWN DIAMOND
Shape and Cutting Style ROUND BRILLIANT
Measurements 9.12 - 9.19 X 5.59 MM
GRADING RESULTS
Carat Weight 2.91 CARATS
Color Grade F
Clarity Grade VVS 2
Cut Grade IDEAL

PROPORTIONS



Sample Image Used



ADDITIONAL GRADING INFORMATION

Polish EXCELLENT
Symmetry EXCELLENT
Fluorescence NONE
Inscription(s) IGI LG634420767

Comments: This Laboratory Grown Diamond was created by Chemical Vapor Deposition (CVD) growth process and may include post-growth treatment. Type IIa

ADDITIONAL GRADING INFORMATION

Polish EXCELLENT
Symmetry EXCELLENT
Fluorescence NONE
Inscription(s) IGI LG634420767

Comments: This Laboratory Grown Diamond was created by Chemical Vapor Deposition (CVD) growth process and may include post-growth treatment. Type IIa

COLOR

D E F G H I J Faint Very Light Light

CLARITY

IF VVS 1-2 VS 1-2 SI 1-2 I 1-3
Internally Flawless Very Very Slightly Included Very Slightly Included Slightly Included Included



IGI

May 19, 2024
IGI Report No LG634420767
ROUND BRILLIANT
9.12 - 9.19 X 5.59 MM
2.91 CARATS
Color Grade F
Clarity Grade VVS 2
Cut Grade IDEAL
Depth 61.1%
Table 88%
Girdle Thin To Slightly Thick (Faceted)
Culet Pointed
Polish EXCELLENT
Symmetry EXCELLENT
Fluorescence NONE
Inscriptions IGI LG634420767

Comments: This Laboratory Grown Diamond was created by Chemical Vapor Deposition (CVD) growth process and may include post-growth treatment. Type IIa