



**ELECTRONIC COPY**

## LABORATORY GROWN DIAMOND REPORT

May 21, 2024	
IGI Report Number	LG634422284
Description	LABORATORY GROWN DIAMOND
Shape and Cutting Style	ROUND BRILLIANT
Measurements	7.92 - 7.97 X 4.88 MM

## GRADING RESULTS

Carat Weight	1.92 CARAT
Color Grade	F
Clarity Grade	VS 1
Cut Grade	IDEAL

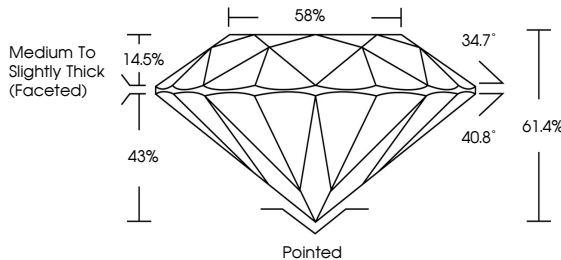
### ADDITIONAL GRADING INFORMATION

Polish	EXCELLENT
Symmetry	EXCELLENT
Fluorescence	NONE
Inscription(s)	 LG634422284

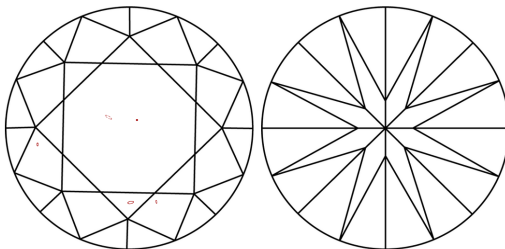
Comments: This Laboratory Grown Diamond was created by Chemical Vapor Deposition (CVD) growth process and may include post-growth treatment.  
Type IIa

LG634422284  
Report verification at [igi.org](https://igi.org)

## PROPORTIONS

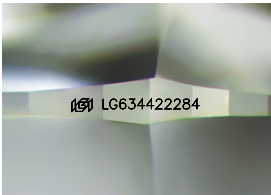


## CLARITY CHARACTERISTICS



## KEY TO SYMBOLS

Red symbols indicate internal characteristics.  
Green symbols indicate external characteristics.



Sample Image Used

## COLOR

D E F G H I J Faint Very Light Light

## CLARITY

IF	VVS <sup>1-2</sup>	VS <sup>1-2</sup>	SI <sup>1-2</sup>	I <sup>1-3</sup>
Internally Flawless	Very Very Slightly Included	Very Slightly Included	Slightly Included	Included



© IGI 2020, International Gemological Institute

FD - 10 20

**www.igi.org**

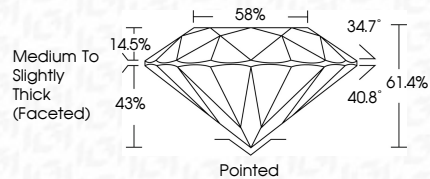
## DIAMOND REPORT



May 21, 2024	
IGI Report Number	LG634422284
Description	LABORATORY GROWN DIAMOND
Shape and Cutting Style	ROUND BRILLIANT
Measurements	7.92 - 7.97 X 4.88 MM

## GRADING RESULTS

Carat Weight	1.92 CARAT
Color Grade	F
Clarity Grade	VS 1
Cut Grade	IDEAL



### ADDITIONAL GRADING INFORMATION

Polish	EXCELLENT
Symmetry	EXCELLENT
Fluorescence	NONE
Inscription(s)	 LG63442284

Comments: This Laboratory Grown Diamond was created by Chemical Vapor Deposition (CVD) growth process and may include post-growth treatment.  
Type IIa



IGI

May 21, 2024  
IGI Report No LG63442284

ROUND BRILLIANT	1.92 CARAT F	Vs1 IDEAL 61.4% 59%	Pointed EXCELLENT NONE
7.97 X 4.88 MM	Corat Weight	Medium To Slighly Thick (rounded)	all (GSM) 27274
	Color Grade		
	Clarity Grade		
	Cut Grade		
	Depth		
	Table		
	Girdle		
	Polish		
	Symmetry		
	Fluorescence		
	Inspection(s)		

**Comments:**  
This Laboratory Grown Diamond was created by Chemical Vapor Deposition (CVD) growth process and may include post-growth treatment.  
Type IIa