



ELECTRONIC COPY

LABORATORY GROWN DIAMOND REPORT

May 14, 2024	
IGI Report Number	LG634435542
Description	LABORATORY GROWN DIAMOND
Shape and Cutting Style	SQUARE CUSHION BRILLIANT
Measurements	7.67 X 7.32 X 4.90 MM

GRADING RESULTS

Carat Weight	2.06 CARATS
Color Grade	F
Clarity Grade	VS 1

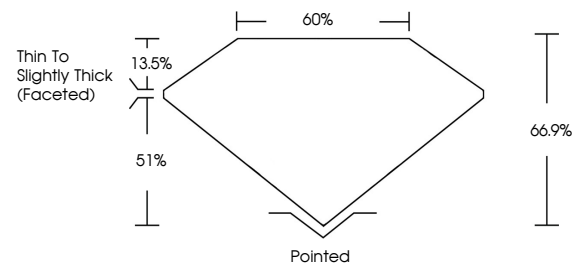
ADDITIONAL GRADING INFORMATION

Polish	EXCELLENT
Symmetry	EXCELLENT
Fluorescence	NONE
Inscription(s)	 LG634435542

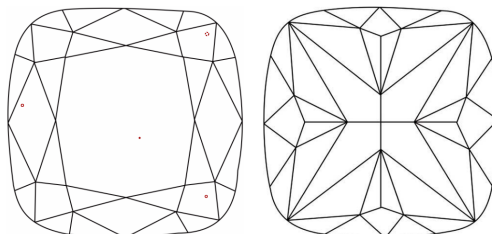
Comments: This Laboratory Grown Diamond was created by Chemical Vapor Deposition (CVD) growth process and may include post-growth treatment.
Type IIa

LG634435542
Report verification at igi.org

PROPORTIONS

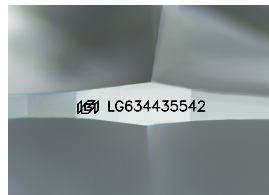


CLARITY CHARACTERISTICS



KEY TO SYMBOLS

Red symbols indicate internal characteristics.
Green symbols indicate external characteristics.



Sample Image Used

COLOR

D E F G H I J Faint Very Light Light

CLARITY

IF	VVS ¹⁻²	VS ¹⁻²	SI ¹⁻²	I ¹⁻³
Internally Flawless	Very Very Slightly Included	Very Slightly Included	Slightly Included	Included



© IGI 2020, International Gemological Institute

FD - 10 20

www.igi.org

DIAMOND REPORT



May 14, 2024	
IGI Report Number	LG634435542
Description	LABORATORY GROWN DIAMOND
Shape and Cutting Style	SQUARE CUSHION BRILLIANT
Measurements	7.67 X 7.32 X 4.90 MM

GRADING RESULTS

Carat Weight	2.06 CARATS
Color Grade	F
Clarity Grade	VS 1

ADDITIONAL GRADING INFORMATION

Polish	EXCELLENT
Symmetry	EXCELLENT
Fluorescence	NONE
Inscription(s)	 LG634435542

Comments: This Laboratory Grown Diamond was created by Chemical Vapor Deposition (CVD) growth process and may include post-growth treatment.
Type IIa



May 14, 2024	1.67 x 1.32 x 4.90 MM	2.05 CARATS	Vs 1	66.9%	60%	Thin to slightly thick (faceted)	Polished	EXCELLENT	EXCELLENT	NONE	#81 LG34435542	<p>Comments: Created by Crown Diamond using certified by Crown Diamond (CVD) growth process and may include post-growth treatment. Type IIa</p>
GI Report No. LG34435542	SQUARE CUSHION BRILLIANT	Carat Weight	Color Grade	Clarity Grade	Depth	Girdle	Symmetry	Fluorescence	Inscription(s)			