



ELECTRONIC COPY

LABORATORY GROWN DIAMOND REPORT

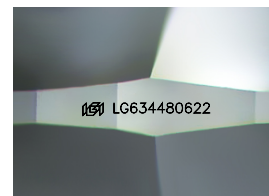
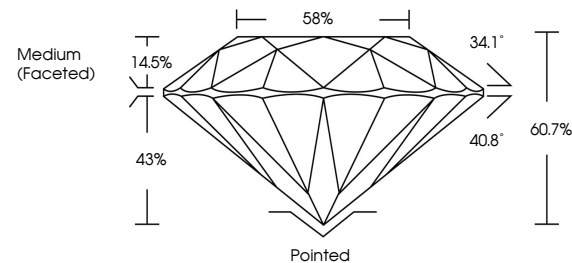
LG634480622
Report verification at igi.org

May 9, 2024	
IGI Report Number	LG634480622
Description	LABORATORY GROWN DIAMOND
Shape and Cutting Style	ROUND BRILLIANT
Measurements	8.35 - 8.40 X 5.08 MM
GRADING RESULTS	
Carat Weight	2.17 CARATS
Color Grade	D
Clarity Grade	VVS 1
Cut Grade	IDEAL

ADDITIONAL GRADING INFORMATION

Polish	EXCELLENT
Symmetry	EXCELLENT
Fluorescence	NONE
Inscription(s)	 LG634480622

Comments: HEARTS & ARROWS
This Laboratory Grown Diamond was created by
Chemical Vapor Deposition (CVD) growth process and
may include post-growth treatment.
Type IIa



Sample Image Used

COLOR

D E F G H I J Faint Very Light Light

CLARITY

IF	VVS ¹⁻²	VS ¹⁻²	SI ¹⁻²	I ¹⁻³
Internally Flawless	Very Very Slightly Included	Very Slightly Included	Slightly Included	Included

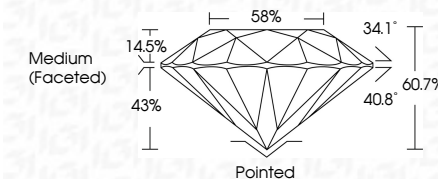


www.igi.org

DIAMOND REPORT



May 9, 2024	
IGI Report Number	LG634480622
Description	LABORATORY GROWN DIAMOND
Shape and Cutting Style	ROUND BRILLIANT
Measurements	8.35 - 8.40 X 5.08 MM
GRADING RESULTS	
Carat Weight	2.17 CARATS
Color Grade	D
Clarity Grade	VVS 1
Cut Grade	IDEAL



ADDITIONAL GRADING INFORMATION

Polish	EXCELLENT
Symmetry	EXCELLENT
Fluorescence	NONE
Inscription(s)	LG634480622
Comments: HEARTS & ARROWS	
This Laboratory Grown Diamond was created by Chemical Vapor Deposition (CVD) growth process and may include post-growth treatment.	
Type IIa	



© IGI 2020, International Gemological Institute

FD - 10 20



THIS DOCUMENT WAS PRODUCED WITH THE FOLLOWING SECURITY MEASURES: SPECIAL DOCUMENT PAPER, INK SCREENS, WATERMARK, BACKGROUND DESIGNS, HOLOGRAM AND OTHER SECURITY FEATURES NOT LISTED AND DO EXCEED DOCUMENT SECURITY INDUSTRY GUIDELINES

May 9, 2024	IGI Report No. LG634480022	3.35 - 8.40 X 5.08 MM	Color Weight	2.17 CARATS	
ROUND BRILLIANT			Color Grade	D	
			Clarity Grade	VVS 1	
			Cut Grade	IDEAL	
			Depth	60.7%	
			Table	58%	
			Girdle	Medium (Faceted)	
			Culet	Pointed	
			Polish	EXCELLENT	
			Symmetry	EXCELLENT	
			Fluorescence	NONE	
			Inscription(s)	659 LG634480022	

Comments:
 HEARTS & ARROWS
 This Laboratory Group Diamond was created by Chemical Vapor Deposition (CVD) growth process and may include natural inclusions from treatment.