

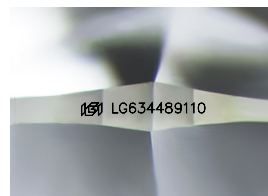
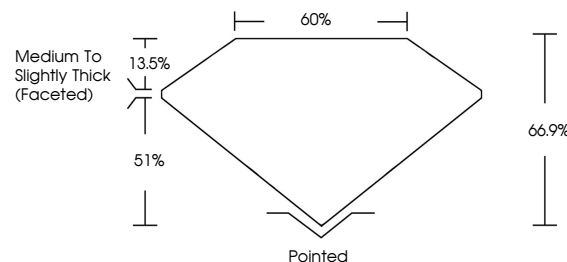


ELECTRONIC COPY

LABORATORY GROWN DIAMOND REPORT

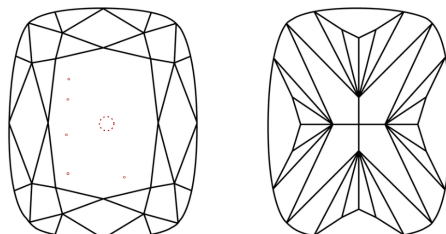
LG634489110
Report verification at lgi.org

PROPORTIONS



Sample Image Used

CLARITY CHARACTERISTICS



KEY TO SYMBOLS

Red symbols indicate internal characteristics.
Green symbols indicate external characteristics.

COLOR

D E F G H I J Faint Very Light Light

CLARITY

IF	VVS ¹⁻²	VS ¹⁻²	SI ¹⁻²	I ¹⁻³
Internally Flawless	Very Very Slightly Included	Very Slightly Included	Slightly Included	Included



© IGI 2020, International Gemological Institute

FD - 10 20

www.igi.org

DIAMOND REPORT



May 22, 2024

IGI Report Number **LG634489110**Description **LABORATORY GROWN DIAMOND**Shape and Cutting Style **CUSHION BRILLIANT**

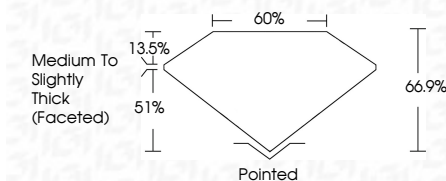
Measurements 10.83 X 7.46 X 4.99 MM

GRADING RESULTS

Carat Weight **3.16 CARATS**

Color Grade **FANCY VIVID BLUE**

Clarity Grade VS 2



ADDITIONAL GRADING INFORMATION

Polish **EXCELLENT**Symmetry **EXCELLENT**Fluorescence **NONE**Inscription(s) LG634489110

Comments: This Laboratory Grown Diamond was created by Chemical Vapor Deposition (CVD) growth process.
Indications of post-growth treatment.



May 22, 2024	GI Report No. LG34489110		
CU SHIMMER BRILLIANT			
10.03 x 7.46 x 4.99 MM	3.16 CARATS		
Color Weight	FANCY VIVID BLUE	Vs 2	
Color Grade		64.9%	
Clarity Grade		60%	
Depth	Medium to Slightly Thick (Faceted)	Painted	
Table		EXCELLENT	
Grille		EXCELLENT	
Quiet		NONE	
Polish		IGS LG34489110	
Symmetry			
Fluorescence			
Inscriptions(s)			
Comments:			
This Laboratory Grown Diamond was created by Chemical Vapor Deposition (CVD) growth process.			
Indications of post-growth treatment.			