

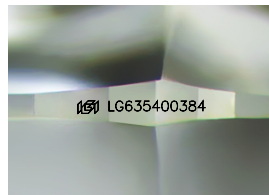
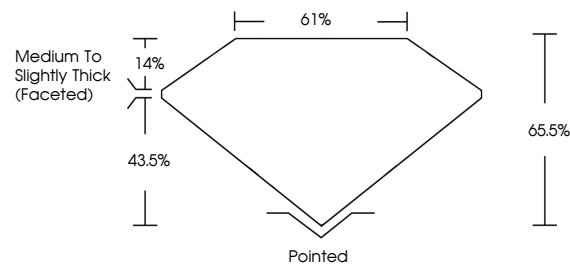


**ELECTRONIC COPY**

## LABORATORY GROWN DIAMOND REPORT

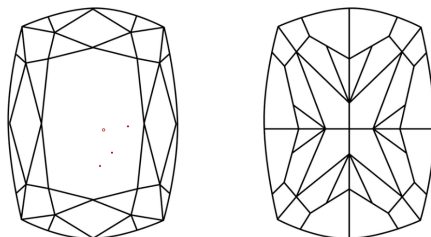
LG635400384  
Report verification at [lgi.org](https://lgi.org)

## PROPORTIONS



Sample Image Used

## CLARITY CHARACTERISTICS



## KEY TO SYMBOLS

Red symbols indicate internal characteristics.  
Green symbols indicate external characteristics.

## COLOR

D E F G H I J Faint Very Light Light

## CLARITY

IF	VVS <sup>1-2</sup>	VS <sup>1-2</sup>	SI <sup>1-2</sup>	I <sup>1-3</sup>
Internally Flawless	Very Very Slightly Included	Very Slightly Included	Slightly Included	Included



© IGI 2020, International Gemological Institute

FD - 10 20

**www.igi.org**

## DIAMOND REPORT



June 5, 2024

IGI Report Number LG635400384

Description **LABORATORY GROWN DIAMOND**

Shape and Cutting Style **CUSHION MODIFIED  
BRILLIANT**

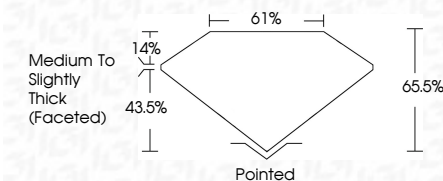
Measurements 10.05 X 6.90 X 4.52 MM

## GRADING RESULTS

Carat Weight **2.82 CARATS**

Color Grade **FANCY VIVID YELLOW**

Clarity Grade VS 1



### ADDITIONAL GRADING INFORMATION

Polish EXCELLENT

Symmetry **EXCELLENT**Fluorescence **NONE**Inscription(s)  LG635400384

Comments: This Laboratory Grown Diamond was created by Chemical Vapor Deposition (CVD) growth process.



IG

[illegible]