

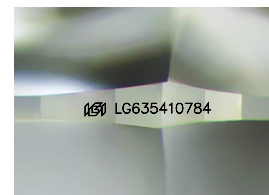
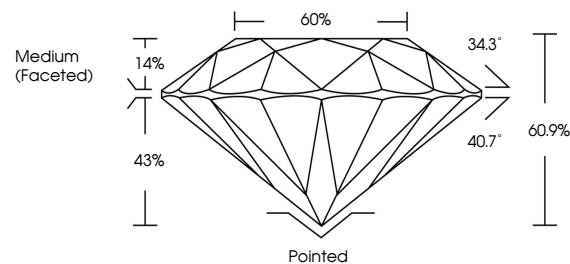


ELECTRONIC COPY

LABORATORY GROWN DIAMOND REPORT

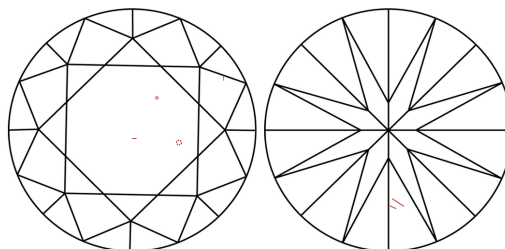
LG635410784
Report verification at lgi.org

PROPORTIONS



Sample Image Used

CLARITY CHARACTERISTICS



KEY TO SYMBOLS

Red symbols indicate internal characteristics.
Green symbols indicate external characteristics.

COLOR

D E F G H I J Faint Very Light Light

CLARITY

IF	VVS ^{1,2}	VS ^{1,2}	SI ^{1,2}	I ^{1,3}
Internally Flawless	Very Very Slightly Included	Very Slightly Included	Slightly Included	Included

LABORATORY GROWN DIAMOND REPORT



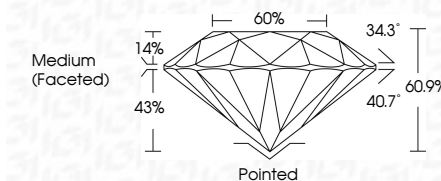
June 10, 2024	
IGI Report Number	LG635410784
Description	LABORATORY GROWN DIAMOND

Shape and Cutting Style **ROUND BRILLIANT**

Measurements 9.20 - 9.25 X 5.62 MM

GRADING RESULTS

Carat Weight	3.00 CARATS
Color Grade	LIGHT PINK
Clarity Grade	SI 1
Cut Grade	IDEAL



ADDITIONAL GRADING INFORMATION

Polish	EXCELLENT
Symmetry	EXCELLENT
Fluorescence	SLIGHT
Inscription(s)	 LG635410784

Comments: This Laboratory Grown Diamond was created by Chemical Vapor Deposition (CVD) growth process.
Indications of post-growth treatment.



© IGI 2020, International Gemological Institute

FD - 10 20

www.igi.org

THIS DOCUMENT WAS PRODUCED WITH THE FOLLOWING SECURITY MEASURES: SPECIAL DOCUMENT PAPER, INK SCREENS, WATERMARK, BACKGROUND DESIGNS, HOLOGRAM AND OTHER SECURITY FEATURES NOT LISTED AND DO EXCEED DOCUMENT SECURITY INDUSTRY GUIDELINE

June 10, 2024
GI Report No LG635410784
ROUND BRILLIANT

2.20 - 9.25 X 5.62 MM
Carat Weight 3.00 CARATS

9.20 - 9.20 X 3.02 MM	3.00 CARATS	LIGHT PINK
Carat Weight		
Color Grade		

Color Grade	Clarity Grade	SI 1	Light Pink
-------------	---------------	------	------------

Cut Grade	IDEAL
Depth	60.9%

	60%	Medium (Encased)
Table		
Girdle		

Medium (Faceted)

	Pointed	EXCELLENT
Culet		
Polish		

Symmetry	EXCELLENT
Fluorescence	SLIGHT

Inscription(s)

Comments:
This Laboratory Grown Diamond was

created by Chemical Vapor Deposition (CVD) growth process.

indications of post-growth treadmill.