

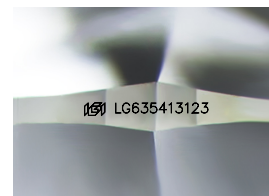
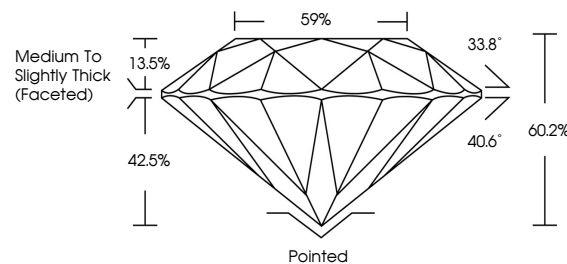


**ELECTRONIC COPY**

## LABORATORY GROWN DIAMOND REPORT

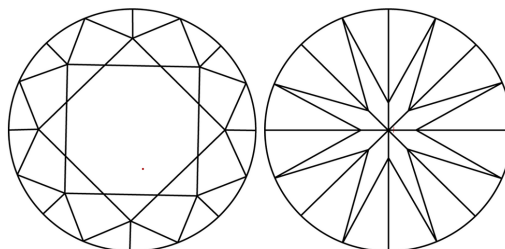
LG635413123  
Report verification at [igi.org](https://igi.org)

## PROPORTIONS



Sample Image Used

## CLARITY CHARACTERISTICS



### KEY TO SYMBOLS

Red symbols indicate internal characteristics.  
Green symbols indicate external characteristics.

## COLOR

D E F G H I J Faint Very Light Light

## CLARITY

IF	VVS <sup>1,2</sup>	VS <sup>1,2</sup>	SI <sup>1,2</sup>	I <sup>1,3</sup>
Internally Flawless	Very Very Slightly Included	Very Slightly Included	Slightly Included	Included



© IGI 2020, International Gemological Institute

FD - 10 20

**www.igi.org**

## DIAMOND REPORT



May 24, 2024

IGI Report Number **LG635413123**

Description	LABORATORY GROWN DIAMOND
-------------	--------------------------

Shape and Cutting Style **ROUND BRILLIANT**

Measurements	6.56 - 6.60 X 3.96 MM
--------------	-----------------------

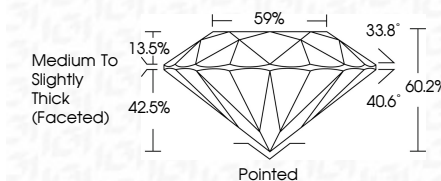
## GRADING RESULTS

Carat Weight 1.06 CARAT

Color Grade E

Clarity Grade **VVS 2**

Cut Grade **IDEAL**



### ADDITIONAL GRADING INFORMATION

Polish **EXCELLENT**Symmetry **EXCELLENT**Fluorescence **NONE**Inscription(s)  LG635413123

Comments: This Laboratory Grown Diamond was created by Chemical Vapor Deposition (CVD) growth process.  
Type IIa



May 24, 2024	
G Report No LG36813723	
SOUND BRILLIANT	
1.06 CARAT	
E	
VVS 2	
IDEAL	
60.2%	
95%	
Medium to Slightly Thick Facet(s)	
Pinkish	
EXCELLENT	
EXCELLENT	
NONE	
#81 LG36813723	
Comments:	
This Laboratory Grown Diamond was created by Chemical Vapor Deposition (CVD) growth process.	
Type IIa	