



ELECTRONIC COPY

LABORATORY GROWN DIAMOND REPORT

| | |
|-------------------------|--------------------------|
| May 23, 2024 | |
| IGI Report Number | LG635416648 |
| Description | LABORATORY GROWN DIAMOND |
| Shape and Cutting Style | ROUND BRILLIANT |
| Measurements | 7.62 - 7.66 X 4.70 MM |

GRADING RESULTS

| | |
|---------------|------------|
| Carat Weight | 1.69 CARAT |
| Color Grade | E |
| Clarity Grade | VVS 2 |
| Cut Grade | IDEAL |

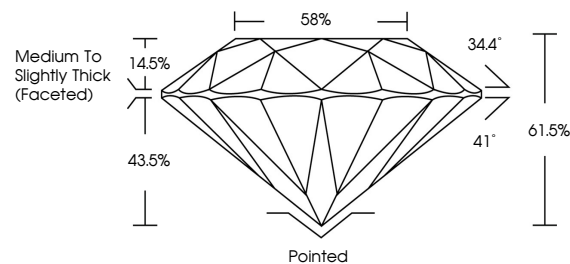
ADDITIONAL GRADING INFORMATION

| | |
|----------------|---|
| Polish | EXCELLENT |
| Symmetry | EXCELLENT |
| Fluorescence | NONE |
| Inscription(s) |  LG635416648 |

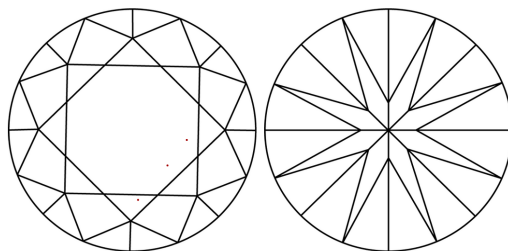
Comments: This Laboratory Grown Diamond was created by Chemical Vapor Deposition (CVD) growth process.
Type IIa

LG635416648
Report verification at igi.org

PROPORTIONS

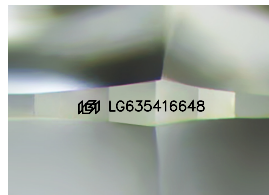


CLARITY CHARACTERISTICS



KEY TO SYMBOLS

Red symbols indicate internal characteristics.
Green symbols indicate external characteristics.



Sample Image Used

COLOR

D E F G H I J Faint Very Light Light

CLARITY

| IF | VVS ¹⁻² | VS ¹⁻² | SI ¹⁻² | I ¹⁻³ |
|---------------------|-----------------------------|------------------------|-------------------|------------------|
| Internally Flawless | Very Very Slightly Included | Very Slightly Included | Slightly Included | Included |



© IGI 2020, International Gemological Institute

FD - 10 20

www.igi.org

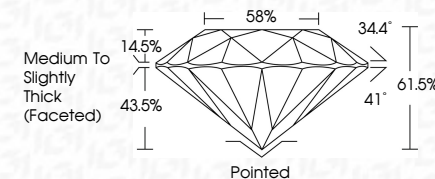
DIAMOND REPORT



| | |
|-------------------------|--------------------------|
| May 23, 2024 | |
| IGI Report Number | LG635416648 |
| Description | LABORATORY GROWN DIAMOND |
| Shape and Cutting Style | ROUND BRILLIANT |
| Measurements | 7.62 - 7.66 X 4.70 MM |

GRADING RESULTS

| | |
|---------------|------------|
| Carat Weight | 1.69 CARAT |
| Color Grade | E |
| Clarity Grade | VVS 2 |
| Cut Grade | IDEAL |



ADDITIONAL GRADING INFORMATION

| | |
|--|---|
| Polish | EXCELLENT |
| Symmetry | EXCELLENT |
| Fluorescence | NONE |
| Inscription(s) |  LG635416648 |
| Comments: This Laboratory Grown Diamond was created by Chemical Vapor Deposition (CVD) growth process. | |
| Type IIa | |



IG

| | | |
|--|-----------------|------------------------------------|
| May 28, 2024 | Carat Weight | 1.69 CARAT |
| GI Report No LG385416648 | Color Grade | E |
| ROUND BRILLIANT | Clarity Grade | VVS 2 |
| | Cut Grade | IDEAL |
| | Depth | 61.5% |
| | Table | 65% |
| | Grades | Medium to Slightly Thick (Faceted) |
| | Culet | Polished |
| | Polish | EXCELLENT |
| | Symmetry | EXCELLENT |
| | Fluorescence | NONE |
| | Inscriptions(s) | lgf LG385416648 |
| Comments: This Laboratory Grown Diamond was created by Chemical Vapor Deposition growth process. Type IIa | | |