

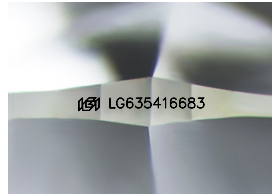
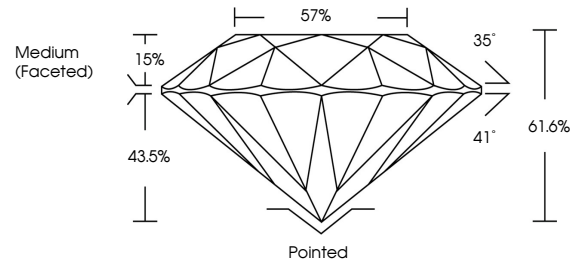


**INTERNATIONAL
GEMOLOGICAL
INSTITUTE**

ELECTRONIC COPY

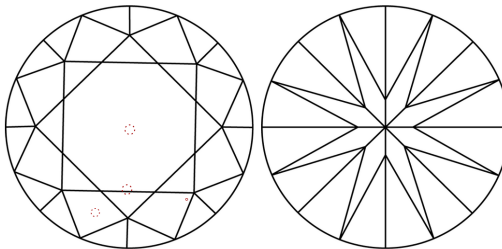
LG635416683
Report verification at [igi.org](https://www.igi.org)

PROPORTIONS



Sample Image Used

CLARITY CHARACTERISTICS



KEY TO SYMBOLS

Red symbols indicate internal characteristics.
Green symbols indicate external characteristics.

COLOR

D E F G H I J Faint Very Light Light

CLARITY

IF	WVS ¹⁻²	VS ¹⁻²	SI ¹⁻²	I ¹⁻³
Internally Flawless	Very Very Slightly Included	Very Slightly Included	Slightly Included	Included



© IGI 2020, International Gemological Institute

FD - 10 20

www.igi.org

DIAMOND REPORT



May 30, 2024

IGI Report Number **LG635416683**

Description	LABORATORY GROWN DIAMOND
-------------	--------------------------

Shape and Cutting Style **ROUND BRILLIANT**

Measurements 7.87 - 7.91 X 4.87 MM

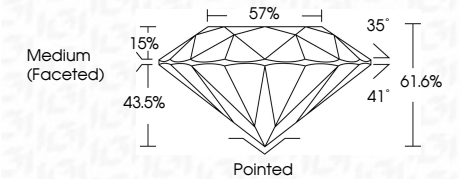
GRADING RESULTS

Carat Weight **1.86 CARAT**

Color Grade H

Clarity Grade VS 2

Cut Grade **IDEAL**



ADDITIONAL GRADING INFORMATION

Polish **EXCELLENT**

Symmetry **EXCELLENT**

Fluorescence **NONE**Inscription(s)  LG635416683

Comments: This Laboratory Grown Diamond was created by Chemical Vapor Deposition (CVD) growth process.
Type IIa



IGI

May 30, 2024	IGI Report No. IG363416683	1.86 CARAT	VVS 2	Polished	Comments: This Laboratory Grown Diamond was created by Chemical Vapor Deposition (CVD) growth process. Type IIa	
ROUND BRILLIANT		H	IDEAL	EXCELLENT		
			61.6%	EXCELLENT		
			57%	NONE		
			Medium (Faceted)	#691 IG363416683		
		1.86 CARAT				
		Color Grade	Clarity Grade	Cut Grade	Symmetry	
		Color Grade	Clarity Grade	Cut Grade	Fluorescence	
		Table	Depth	Girdle	Inscriptions(s)	