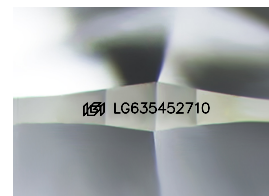
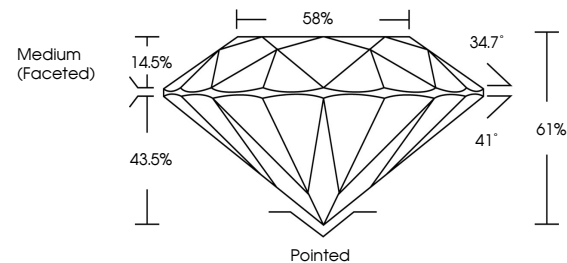


**ELECTRONIC COPY**

## LABORATORY GROWN DIAMOND REPORT

LG635452710  
Report verification at [igi.org](https://igi.org)

## PROPORTIONS



Sample Image Used

## COLOR

D E F G H I J Faint Very Light Light

## CLARITY

IF	VVS <sup>1-2</sup>	VS <sup>1-2</sup>	SI <sup>1-2</sup>	I <sup>1-3</sup>
Internally Flawless	Very Very Slightly Included	Very Slightly Included	Slightly Included	Included



© IGI 2020, International Gemological Institute

FD - 10 20

**www.igi.org**

## DIAMOND REPORT



May 16, 2024

IGI Report Number **LG635452710**

Description	LABORATORY GROWN DIAMOND
-------------	--------------------------

Shape and Cutting Style **ROUND BRILLIANT**

Measurements 7.90 - 7.93 X 4.83 MM

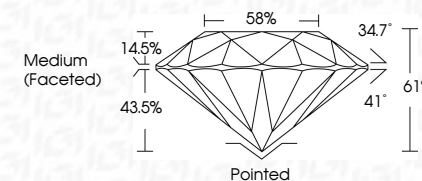
## GRADING RESULTS

Carat Weight **1.84 CARAT**

Color Grade	F
-------------	---

Clarity Grade VS 1

Cut Grade **IDEAL**



### ADDITIONAL GRADING INFORMATION

Polish **EXCELLENT**Symmetry **EXCELLENT**Fluorescence **NONE**Inscription(s)  LG635452710

Comments: This Laboratory Grown Diamond was created by Chemical Vapor Deposition (CVD) growth process and may include post-growth treatment.  
Type IIa



May 16, 2024
Gil report No LG35462710
SOUND BRILLIANT
9.90 - 7.98 X .483 MM
Coral Weight
Color Grade
Vs1 F
1.94 CARAT
VS1
IDEAL
61%
89%
Medium (Faceted)
Culet
Polex
Symmetry
Fluorescence
Inscription(s)
NONE
(#) LG35462710
Comments:
This Laboratory Grown Diamond was created by Chemical Vapor Deposition (CVD) growth process and may include post-growth treatment.
Type IIA