



ELECTRONIC COPY

LABORATORY GROWN DIAMOND REPORT

June 8, 2024	
IGI Report Number	LG636423045
Description	LABORATORY GROWN DIAMOND
Shape and Cutting Style	PRINCESS CUT
Measurements	7.86 X 7.77 X 5.59 MM

GRADING RESULTS

Carat Weight	3.00 CARATS
Color Grade	FANCY INTENSE BLUE
Clarity Grade	SI 1

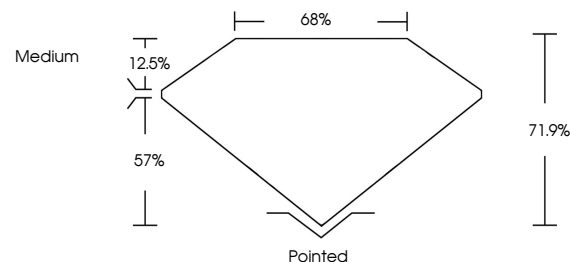
ADDITIONAL GRADING INFORMATION

Polish	EXCELLENT
Symmetry	EXCELLENT
Fluorescence	NONE
Inscription(s)	15 LG636423045

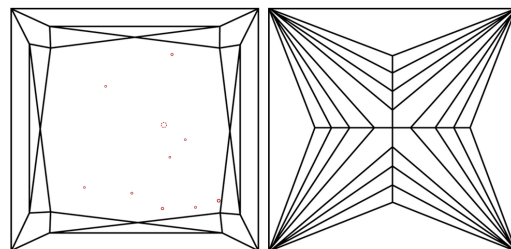
Comments: This Laboratory Grown Diamond was created by Chemical Vapor Deposition (CVD) growth process.
Indications of post-growth treatment.

LG636423045
Report verification at lgi.org

PROPORTIONS

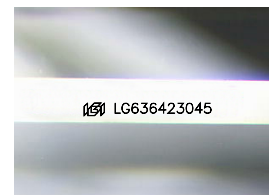


CLARITY CHARACTERISTICS



KEY TO SYMBOLS

Red symbols indicate internal characteristics.
Green symbols indicate external characteristics.



Sample Image Used

COLOR

D E F G H I J Faint Very Light Light

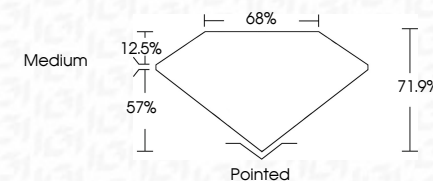
CLARITY

IF	VVS ^{1,2}	VS ^{1,2}	SI ^{1,2}	I ^{1,3}
Internally Flawless	Very Very Slightly Included	Very Slightly Included	Slightly Included	Included

LABORATORY GROWN DIAMOND REPORT



June 8, 2024	
IGI Report Number	LG636423045
Description	LABORATORY GROWN DIAMOND
Shape and Cutting Style	PRINCESS CUT
Measurements	7.86 X 7.77 X 5.59 MM
GRADING RESULTS	
Carat Weight	3.00 CARATS
Color Grade	FANCY INTENSE BLUE
Clarity Grade	SI 1



ADDITIONAL GRADING INFORMATION

Polish	EXCELLENT
Symmetry	EXCELLENT
Fluorescence	NONE
Inscription(s)	 LG636423045
<p>Comments: This Laboratory Grown Diamond was created by Chemical Vapor Deposition (CVD) growth process.</p> <p>Indications of post-growth treatment.</p>	



© IGI 2020, International Gemmological Institute

FD - 10 20



THIS DOCUMENT WAS PRODUCED WITH THE FOLLOWING SECURITY MEASURES: SPECIAL DOCUMENT PAPER, INK SCREENS, WATERMARK, BACKGROUND DESIGNS, HOLOGRAM AND OTHER SECURITY FEATURES NOT LISTED AND DO EXCEED DOCUMENT SECURITY INDUSTRY GUIDELINES

www.igi.org

June 8, 2024
 IGI Report No LG636423045
 PRINCESS CIT

3.00 CARATS	3.00 CARATS
FANCY INTENSE BLUE	FANCY INTENSE BLUE
SI 1	SI 1
71.9%	71.9%
68%	68%
Medium	Medium
Pointed	Pointed
EXCELLENT	EXCELLENT
EXCELLENT	EXCELLENT
NONE	NONE
Fluorescence	Fluorescence

Comments:
This Laboratory Grown Diamond was created by Chemical Vapor Deposition (CVD) growth process.