



**ELECTRONIC COPY**

## LABORATORY GROWN DIAMOND REPORT

June 5, 2024	
IGI Report Number	LG637446352
Description	LABORATORY GROWN DIAMOND
Shape and Cutting Style	ROUND BRILLIANT
Measurements	9.07 - 9.09 X 5.62 MM

## GRADING RESULTS

Carat Weight	2.88 CARATS
Color Grade	G
Clarity Grade	VS 1
Cut Grade	IDEAL

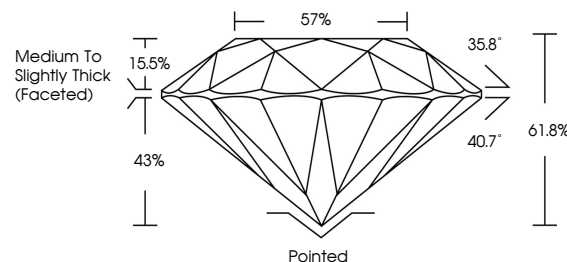
### ADDITIONAL GRADING INFORMATION

Polish	EXCELLENT
Symmetry	EXCELLENT
Fluorescence	NONE
Inscription(s)	15 LG637446352

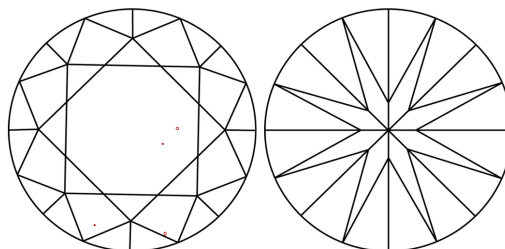
Comments: This Laboratory Grown Diamond was created by Chemical Vapor Deposition (CVD) growth process.  
Type IIa

LG637446352  
Report verification at [lgi.org](https://lgi.org)

## PROPORTIONS



## CLARITY CHARACTERISTICS



## KEY TO SYMBOLS

Red symbols indicate internal characteristics.  
Green symbols indicate external characteristics.



Sample Image Used

**COLOR**

D E F G H I J Faint Very Light Light

## CLARITY

IF	VVS <sup>1-2</sup>	VS <sup>1-2</sup>	SI <sup>1-2</sup>	I <sup>1-3</sup>
Internally Flawless	Very Very Slightly Included	Very Slightly Included	Slightly Included	Included



© IGI 2020, International Gemological Institute

FD - 10 20

**www.igi.org**

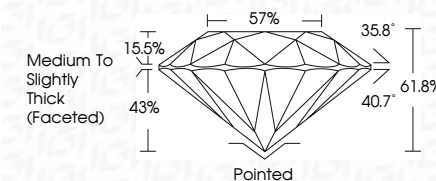
DIAMOND REPORT



June 5, 2024	
IGI Report Number	LG637446352
Description	LABORATORY GROWN DIAMOND
Shape and Cutting Style	ROUND BRILLIANT
Measurements	9.07 - 9.09 X 5.62 MM

## GRADING RESULTS

Carat Weight	2.88 CARATS
Color Grade	G
Clarity Grade	VS 1
Cut Grade	IDEAL



### ADDITIONAL GRADING INFORMATION

Polish	EXCELLENT
Symmetry	EXCELLENT
Fluorescence	NONE
Inscription(s)	LG637446352
<p>Comments: This Laboratory Grown Diamond was created by Chemical Vapor Deposition (CVD) growth process.</p> <p>Type IIa</p>	



IG

June 5, 2024	Color Weight	Carat Weight	2.88 CARATS
GI Report No. LGS57446352	Color Grade	Color	G
ROUND BRILLIANT	Clarity Grade	VS 1	
	Cut Grade	IDEAL	
	Depth	61.6%	
	Table	67%	
	Grades	Medium to slightly thick faceted	
	Culet	Polished	
	Polish	EXCELLENT	
	Symmetry	EXCELLENT	
	Fluorescence	NONE	
	Inscriptions(s)	lg61 LGS57446352	

Comments:

This Laboratory Grown Diamond was created by Chemical Vapor Deposition (CVD) and is a natural type IIa.