



ELECTRONIC COPY

LABORATORY GROWN DIAMOND REPORT

| | |
|-------------------------|--------------------------|
| June 4, 2024 | |
| IGI Report Number | LG637451350 |
| Description | LABORATORY GROWN DIAMOND |
| Shape and Cutting Style | ROUND BRILLIANT |
| Measurements | 6.69 - 6.72 X 4.10 MM |

GRADING RESULTS

| | |
|---------------|------------|
| Carat Weight | 1.12 CARAT |
| Color Grade | D |
| Clarity Grade | VS 1 |
| Cut Grade | IDEAL |

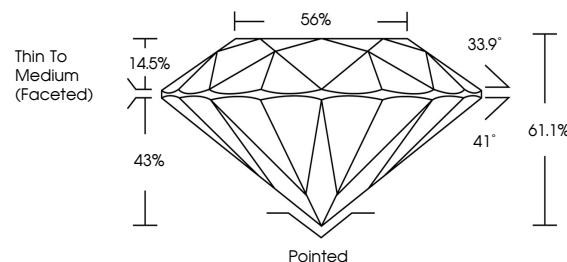
ADDITIONAL GRADING INFORMATION

| | |
|----------------|----------------|
| Polish | EXCELLENT |
| Symmetry | EXCELLENT |
| Fluorescence | NONE |
| Inscription(s) | 15 LG637451350 |

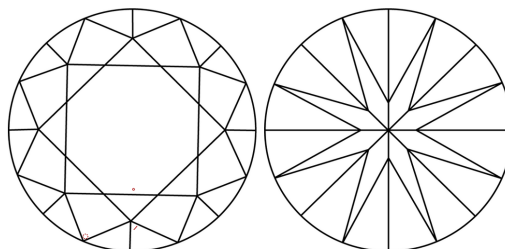
Comments: This Laboratory Grown Diamond was created by Chemical Vapor Deposition (CVD) growth process.
Type IIa

LG637451350
Report verification at lgi.org

PROPORTIONS

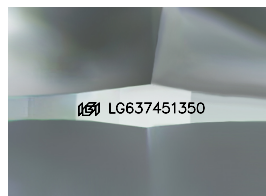


CLARITY CHARACTERISTICS



KEY TO SYMBOLS

Red symbols indicate internal characteristics.
Green symbols indicate external characteristics.



Sample Image Used

COLOR

D E F G H I J Faint Very Light Light

CLARITY

| IF | VVS ¹⁻² | VS ¹⁻² | SI ¹⁻² | I ¹⁻³ |
|---------------------|-----------------------------|------------------------|-------------------|------------------|
| Internally Flawless | Very Very Slightly Included | Very Slightly Included | Slightly Included | Included |



© IGI 2020, International Gemological Institute

FD - 10 20

www.igi.org

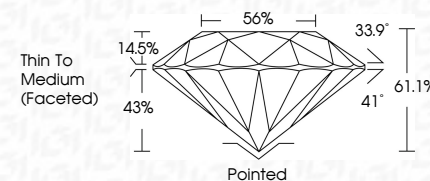
DIAMOND REPORT



| | |
|-------------------------|--------------------------|
| June 4, 2024 | |
| IGI Report Number | LG637451350 |
| Description | LABORATORY GROWN DIAMOND |
| Shape and Cutting Style | ROUND BRILLIANT |
| Measurements | 6.69 - 6.72 X 4.10 MM |

GRADING RESULTS

| | |
|---------------|------------|
| Carat Weight | 1.12 CARAT |
| Color Grade | D |
| Clarity Grade | VS 1 |
| Cut Grade | IDEAL |



ADDITIONAL GRADING INFORMATION

| | |
|--|---|
| Polish | EXCELLENT |
| Symmetry | EXCELLENT |
| Fluorescence | NONE |
| Inscription(s) |  LG637451350 |
| Comments: This Laboratory Grown Diamond was created by Chemical Vapor Deposition (CVD) growth process. | |
| Type IIa | |



IG

| | | | |
|---------------------------|-----------------|--------------------------|------------|
| June 4, 2024 | Color Weight | Carat | 1.12 CARAT |
| GI Report No. IG337451350 | Color Grade | D | |
| ROUND BRILLIANT | Clarity Grade | VS 1 | |
| 6.56 - 6.72 X 4.10 MM | Cut Grade | IDEAL | |
| | Depth | 61.1% | |
| | Table | 55% | |
| | Girdle | Thin To Medium (rounded) | |
| | Culet | Pointed | |
| | Polish | EXCELLENT | |
| | Symmetry | EXCELLENT | |
| | Fluorescence | NONE | |
| | Inscriptions(s) | IGI LG337451350 | |

Comments: This Laboratory Grown Diamond was created by Chemical Vapor Deposition growth process.

Type IIa