

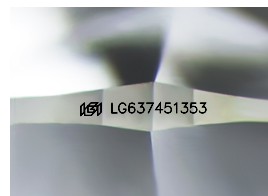
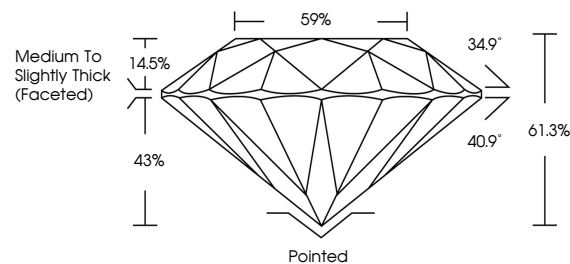


ELECTRONIC COPY

LABORATORY GROWN DIAMOND REPORT

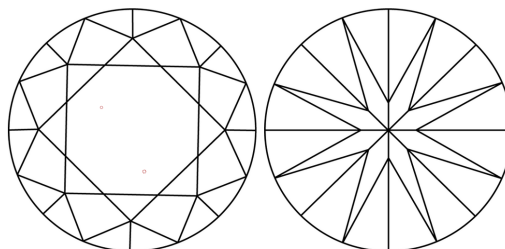
LG637451353
Report verification at igi.org

PROPORTIONS



Sample Image Used

CLARITY CHARACTERISTICS



KEY TO SYMBOLS

Red symbols indicate internal characteristics.
Green symbols indicate external characteristics.

COLOR

D E F G H I J Faint Very Light Light

CLARITY

IF	VVS ¹⁻²	VS ¹⁻²	SI ¹⁻²	I ¹⁻³
Internally Flawless	Very Very Slightly Included	Very Slightly Included	Slightly Included	Included



© IGI 2020, International Gemological Institute

FD - 10 20

www.igi.org

DIAMOND REPORT



June 5, 2024

IGI Report Number **LG637451353**Description **LABORATORY GROWN DIAMOND**Shape and Cutting Style **ROUND BRILLIANT**

Measurements 6.61 - 6.66 X 4.06 MM

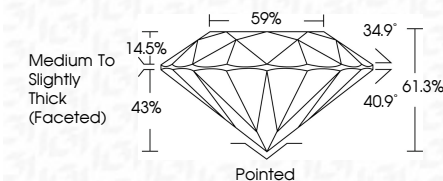
GRADING RESULTS

Carat Weight **1.11 CARAT**

Color Grade D

Clarity Grade VS 1

Cut Grade **IDEAL**



ADDITIONAL GRADING INFORMATION

Polish **EXCELLENT**Symmetry **EXCELLENT**Fluorescence **NONE**Inscription(s) LG637451353

Comments: This Laboratory Grown Diamond was created by Chemical Vapor Deposition (CVD) growth process.
Type IIa



IG

June 5, 2024	GI Report No LG537461353	ROUND BRILLIANT	1.11 CARAT	Vs1	Polished	Comments: This Laboratory Grown Diamond was created by Chemical Vapor Deposition (CVD) growth process. Type IIa
		3.61 - 4.66 X 4.06 MM	D	IDEAL	EXCELLENT	
		Carat Weight		61.3%	EXCELLENT	
		Color Grade		89%	NONE	
		Cut Grade		Medium to Slightly Thick (Faceted)	#69 LG537461353	
		Depth				
		Table				
		Grain				
		Culet				
		Polish				
		Symmetry				
		Fluorescence				
		Inscriptions(s)				