



**ELECTRONIC COPY**

## LABORATORY GROWN DIAMOND REPORT

LG638428441  
Report verification at [igi.org](https://igi.org)

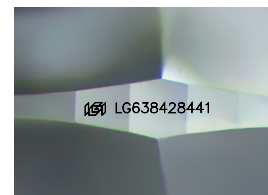
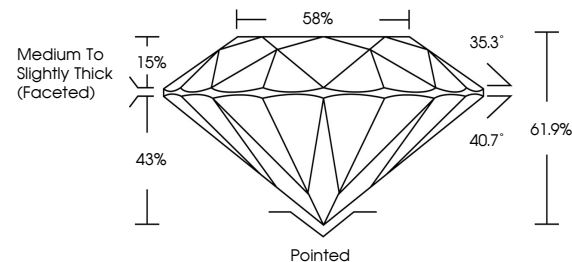
June 18, 2024	
IGI Report Number	LG638428441
Description	LABORATORY GROWN DIAMOND
Shape and Cutting Style	ROUND BRILLIANT
Measurements	9.18 - 9.25 X 5.71 MM
GRADING RESULTS	
Carat Weight	3.01 CARATS
Color Grade	H
Clarity Grade	VVS 2
Cut Grade	IDEAL

### ADDITIONAL GRADING INFORMATION

Polish	EXCELLENT
Symmetry	EXCELLENT
Fluorescence	NONE
Inscription(s)	15 LG638428441

Comments: This Laboratory Grown Diamond was created by Chemical Vapor Deposition (CVD) growth process.  
Type IIa

## PROPORTIONS



Sample Image Used

## COLOR

D E F G H I J Faint Very Light Light

## CLARITY

IF	VVS <sup>1-2</sup>	VS <sup>1-2</sup>	SI <sup>1-2</sup>	I <sup>1-3</sup>
Internally Flawless	Very Very Slightly Included	Very Slightly Included	Slightly Included	Included

© IGI 2020, International Gemological Institute

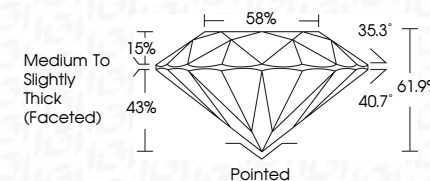
FD - 10 20

**www.igi.org**

## LABORATORY GROWN DIAMOND REPORT



June 18, 2024	
IGI Report Number	LG638428441
Description	LABORATORY GROWN DIAMOND
Shape and Cutting Style	ROUND BRILLIANT
Measurements	9.18 - 9.25 X 5.71 MM
<b>GRADING RESULTS</b>	
Carat Weight	3.01 CARATS
Color Grade	H
Clarity Grade	VVS 2
Cut Grade	IDEAL



### ADDITIONAL GRADING INFORMATION

Polish	EXCELLENT
Symmetry	EXCELLENT
Fluorescence	NONE
Inscription(s)	(15) LG63842844
<p>Comments: This Laboratory Grown Diamond was created by Chemical Vapor Deposition (CVD) growth process.</p> <p>Type IIa</p>	



June 18, 2024	GI Report No. LG38429441	3.01 CARATS
ROUND BRILLIANT		
18 - 18.5 X 5.71 MM		
Carat Weight		
Color Grade	H	
Clarity Grade	VVS 2	
Depth	IDEAL	
Table	61.9%	
Girdle	59%	
	Medium to Slightly Thick (6-cared)	
Culet	Pointed	
Polish	EXCELLENT	
Symmetry	EXCELLENT	
Fluorescence	NONE	
Inscription(s)	6891LG38429441	
Comments:	This Laboratory Grown Diamond was created by Chemical Vapor Deposition (CVD) growth process.	
Type IIA		