

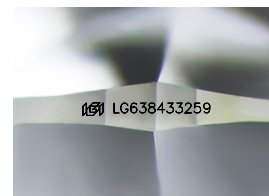
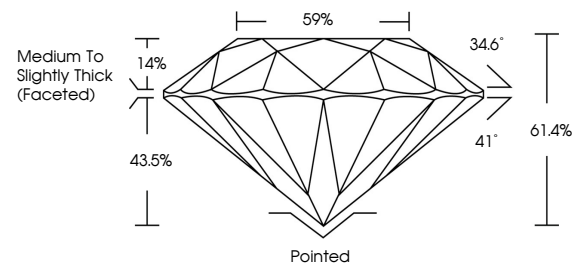


ELECTRONIC COPY

LABORATORY GROWN DIAMOND REPORT

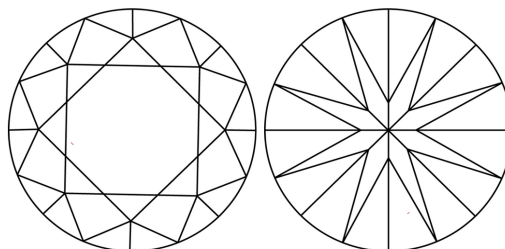
LG638433259
Report verification at igi.org

PROPORTIONS



Sample Image Used

CLARITY CHARACTERISTICS



KEY TO SYMBOLS

Red symbols indicate internal characteristics.
Green symbols indicate external characteristics.

COLOR

D E F G H I J Faint Very Light Light

CLARITY

IF	VVS ¹⁻²	VS ¹⁻²	SI ¹⁻²	I ¹⁻³
Internally Flawless	Very Very Slightly Included	Very Slightly Included	Slightly Included	Included



© IGI 2020, International Gemological Institute

FD - 10 20

www.igi.org

DIAMOND REPORT



June 7, 2024

IGI Report Number **LG638433259**Description **LABORATORY GROWN DIAMOND**Shape and Cutting Style **ROUND BRILLIANT**

Measurements 7.23 - 7.25 X 4.45 MM

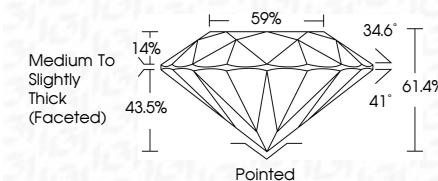
GRADING RESULTS

Carat Weight **1.45 CARAT**

Color Grade E

Clarity Grade VVS 2

Cut Grade **IDEAL**



ADDITIONAL GRADING INFORMATION

Polish **EXCELLENT**Symmetry **EXCELLENT**Fluorescence **NONE**Inscription(s) LG638433259

Comments: This Laboratory Grown Diamond was created by Chemical Vapor Deposition (CVD) growth process.
Type IIa



June 7, 2024	GI Report No LG38433259	1.45 CARAT	VVS 2	IDEAL	61.4%	59%	Medium to Slightly Thick (Faceted)	Pointed	EXCELLENT	EXCELLENT	NONE	lg31 LG38433259
ROUND BRILLIANT												
7.23 - 7.25 X 4.45 MM												
Color Weight	Color Grade	Clarity Grade	Cut Grade	Table	Girdle	Depth	Polish	Symmetry	Fluorescence	Inscriptions(s)	Comments:	
											Primary Gem Diamond was treated by Chemical Vapor Deposition (CVD) growth process.	Type IIG