

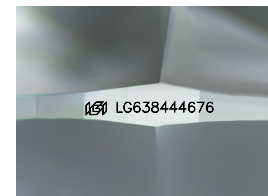
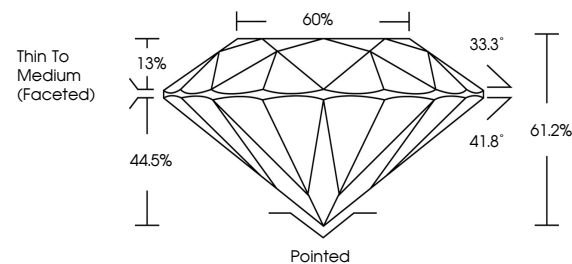


ELECTRONIC COPY

LABORATORY GROWN DIAMOND REPORT

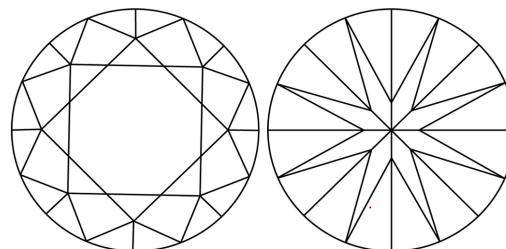
LG638444676
Report verification at igi.org

PROPORTIONS



Sample Image Used

CLARITY CHARACTERISTICS



KEY TO SYMBOLS

Red symbols indicate internal characteristics.
Green symbols indicate external characteristics.

COLOR

D E F G H I J Faint Very Light Light

CLARITY

IF	VVS ^{1,2}	VS ^{1,2}	SI ^{1,2}	I ^{1,3}
Internally Flawless	Very Very Slightly Included	Very Slightly Included	Slightly Included	Included

LABORATORY GROWN DIAMOND REPORT



June 8, 2024

IGI Report Number **LG638444676**

Description	LABORATORY GROWN DIAMOND
-------------	--------------------------

Shape and Cutting Style **ROUND BRILLIANT**

Measurements 6.52 - 6.56 X 4.00 MM

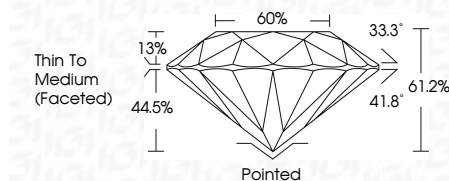
GRADING RESULTS

Carat Weight 1.05 CARAT

Color Grade E

Clarity Grade WS 1

Cut Grade **EXCELLENT**



ADDITIONAL GRADING INFORMATION

Polish **EXCELLENT**Symmetry **EXCELLENT**Fluorescence **NONE**Inscription(s) **13** LG638444676

Comments: This Laboratory Grown Diamond was created by Chemical Vapor Deposition (CVD) growth process.
Type IIa



www.igi.org

© IGI 2020, International Gemological Institute

FD - 10 20



THIS DOCUMENT WAS PRODUCED WITH THE FOLLOWING SECURITY MEASURES: SPECIAL DOCUMENT PAPER, INK SCREENS, WATERMARK, BACKGROUND DESIGNS, HOLOGRAM AND OTHER SECURITY FEATURES NOT LISTED AND DO EXCEED DOCUMENT SECURITY INDUSTRY GUIDELINES

June 8, 2024
GI Report No LG638444676
ROUND BRILLIANT

6.59 - 6.55 X 4.00 MM	1.05 CARAT
Carat Weight	E
Color Grade	VVS 1
Clarity Grade	EXCELLENT
Cut Grade	61.2%
Depth	50%
Table	Thin to Medium
Girdle	(Faceted)
Culet	Pointed
Polish	EXCELLENT
Symmetry	EXCELLENT
Fluorescence	NONE
	4991 (GIA#58446675)

Comments:
This Laboratory Grown Diamond was created by Chemical Vapor Deposition (CVD) growth process.