

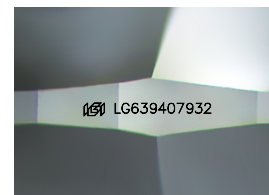
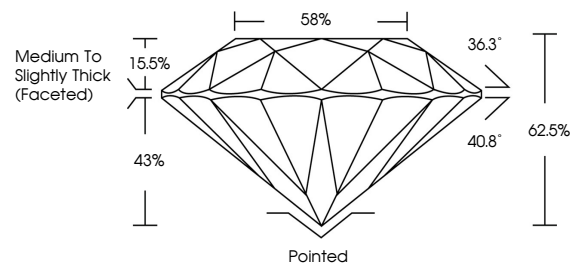


ELECTRONIC COPY

LABORATORY GROWN DIAMOND REPORT

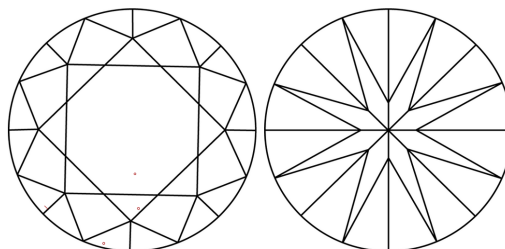
LG639407932
Report verification at igi.org

PROPORTIONS



Sample Image Used

CLARITY CHARACTERISTICS



KEY TO SYMBOLS

Red symbols indicate internal characteristics.
Green symbols indicate external characteristics.

COLOR

D E F G H I J Faint Very Light Light

CLARITY

IF	VVS ^{1,2}	VS ^{1,2}	SI ^{1,2}	I ^{1,3}
Internally Flawless	Very Very Slightly Included	Very Slightly Included	Slightly Included	Included

LABORATORY GROWN DIAMOND REPORT



June 15, 2024

IGI Report Number **LG639407932**Description **LABORATORY GROWN DIAMOND**Shape and Cutting Style **ROUND BRILLIANT**

Measurements 7.85 - 7.91 X 4.93 MM

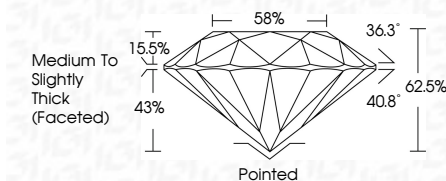
GRADING RESULTS

Carat Weight 1.92 CARAT

Color Grade

Clarity Grade VS 1

Cut Grade **EXCELLENT**



ADDITIONAL GRADING INFORMATION

Polish **EXCELLENT**Symmetry **EXCELLENT**Fluorescence **NONE**Inscription(s) LG639407932

Comments: This Laboratory Grown Diamond was created by Chemical Vapor Deposition (CVD) growth process.
Type IIa



© IGI 2020, International Gemological Institute

FD - 10 20

www.igi.org

THIS DOCUMENT WAS PRODUCED WITH THE FOLLOWING SECURITY MEASURES: SPECIAL DOCUMENT PAPER, INK SCREENS, WATERMARK BACKGROUND DESIGNS, HOLOGRAM AND OTHER SECURITY FEATURES NOT LISTED AND DO EXCEED DOCUMENT SECURITY INDUSTRY GUIDELINES

June 15, 2024
 IGI Report No LG639407932
 ROUND BRILLIANT

ROUND BRILLIANT	1.85 - 1.91 X 4.03 MM	1.92 CARAT	VS1	EXCELLENT	62.0%	58%	Medium to Slightly Thick Faceted	Pointed	EXCELLENT	EXCELLENT	NONE	cert. GSA 5000000
		Color Grade	Clarity Grade	Cut Grade	Depth	Table	Grades	Culet	Polish	Symmetry	Fluorescence	

Comments:
This Laboratory Grown Diamond was
created by Chemical Vapor Deposition
(CVD) growth process.