

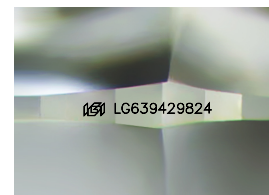
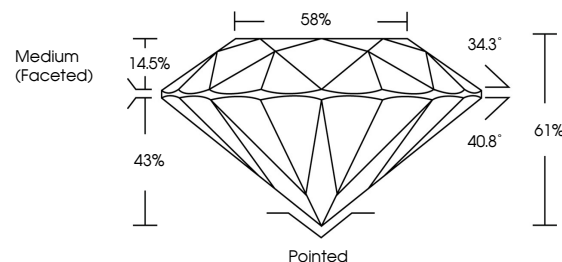


ELECTRONIC COPY

LABORATORY GROWN DIAMOND REPORT

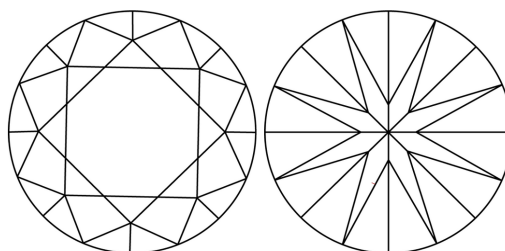
LG639429824
Report verification at lgi.org

PROPORTIONS



Sample Image Used

CLARITY CHARACTERISTICS



KEY TO SYMBOLS

Red symbols indicate internal characteristics.
Green symbols indicate external characteristics.

COLOR

D E F G H I J Faint Very Light Light

CLARITY

IF	VVS ¹⁻²	VS ¹⁻²	SI ¹⁻²	I ¹⁻³
Internally Flawless	Very Very Slightly Included	Very Slightly Included	Slightly Included	Included

LABORATORY GROWN DIAMOND REPORT



June 21, 2024

IGI Report Number LG639429824

Description **LABORATORY GROWN DIAMOND**Shape and Cutting Style **ROUND BRILLIANT**

Measurements 6.62 - 6.66 X 4.05 MM

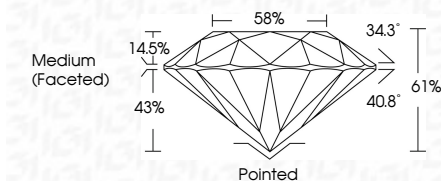
GRADING RESULTS

Carat Weight 1.09 CARAT

Color Grade

Clarity Grade VVS 1

Cut Grade **IDEAL**



ADDITIONAL GRADING INFORMATION

Polish **EXCELLENT**Symmetry **EXCELLENT**Fluorescence **NONE**Inscription(s) LG639429824

Comments: This Laboratory Grown Diamond was created by Chemical Vapor Deposition (CVD) growth process.
Type IIa



June 21, 2024	1.09 CARAT
GJ Report No. GS69429824	FVS 1
ROUND BRILLIANT	IDEAL
	61%
	55%
	Medium (Faceted)
	Pointed
	EXCELLENT
	EXCELLENT
	NONE
	(#) LG69429824

Comments:
The Laboratory Grown Diamond was
created by Chemical Vapor Deposition
(CVD) growth process.
Type IIa