

ELECTRONIC COPY

LABORATORY GROWN DIAMOND REPORT

June 22, 2024	
IGI Report Number	LG639465060
Description	LABORATORY GROWN DIAMOND
Shape and Cutting Style	CUT CORNERED RECTANGULAR MODIFIED BRILLIANT
Measurements	8.63 X 6.06 X 4.07 MM

GRADING RESULTS

Carat Weight	1.87 CARAT
Color Grade	E
Clarity Grade	VS 1

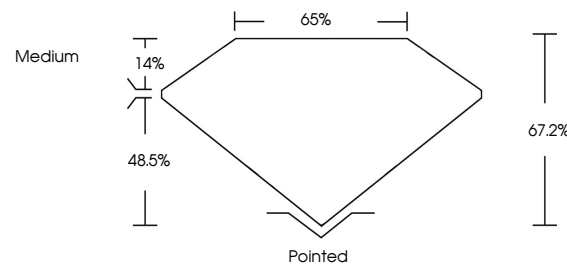
ADDITIONAL GRADING INFORMATION

Polish	EXCELLENT
Symmetry	EXCELLENT
Fluorescence	NONE
Inscription(s)	 LG639465060

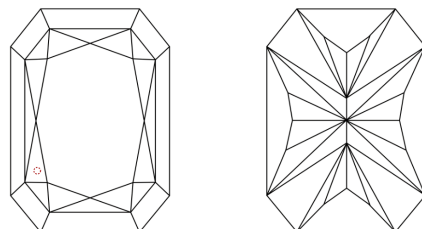
Comments: This Laboratory Grown Diamond was created by Chemical Vapor Deposition (CVD) growth process.
Type IIa

LG639465060
Report verification at igi.org

PROPORTIONS

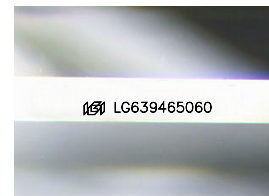


CLARITY CHARACTERISTICS



KEY TO SYMBOLS

Red symbols indicate internal characteristics.
Green symbols indicate external characteristics.



Sample Image Used

COLOR

D E F G H I J Faint Very Light Light

CLARITY

IF	VVS ^{1,2}	VS ^{1,2}	SI ^{1,2}	I ^{1,3}
Internally Flawless	Very Very Slightly Included	Very Slightly Included	Slightly Included	Included

LABORATORY GROWN DIAMOND REPORT



June 22, 2024	
IGI Report Number	LG639465060
Description	LABORATORY GROWN DIAMOND
Shape and Cutting Style	CUT CORNERED RECTANGULAR MODIFIED BRILLIANT

Measurements 8.63 X 6.06 X 4.07 MM

GRADING RESULTS

Carat Weight	1.87 CARAT
Color Grade	E
Clarity Grade	VS 1

ADDITIONAL GRADING INFORMATION

Polish	EXCELLENT
Symmetry	EXCELLENT
Fluorescence	NONE
Inscription(s)	 LG639465060
Comments: This Laboratory Grown Diamond was created by Chemical Vapor Deposition (CVD) growth process.	
Type IIa	



© IGI 2020, International Gemological Institute

FD - 10 20

June 22, 2024	CU Report No. LG590455040	CU CORNERED RECT. MODIFIED BRILLIANT
1.63 X 0.63 X 4.07 MM	1.67 CARAT	E
Color Grade		
Clarity Grade	VS 1	
Depth	67.2%	
Table	65%	
Girdle	Medium	
Culet	Pointed	
Polish	EXCELLENT	
Symmetry	EXCELLENT	
Fluorescence	NONE	
Inscriptions(s)	1691 LG590455040	

Comments:

The Laboratory Grown Diamond was analyzed by Laser Micro Raman Spectroscopy (LMRS) and found to be a type IIa growth process.