



ELECTRONIC COPY

LABORATORY GROWN DIAMOND REPORT

July 2, 2024	
IGI Report Number	LG639484062
Description	LABORATORY GROWN DIAMOND
Shape and Cutting Style	ROUND BRILLIANT
Measurements	9.30 - 9.35 X 5.70 MM

GRADING RESULTS

Carat Weight	3.01 CARATS
Color Grade	FANCY VIVID BLUE
Clarity Grade	VS 2
Cut Grade	IDEAL

ADDITIONAL GRADING INFORMATION

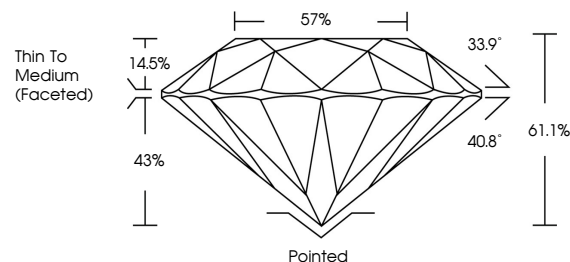
Polish	VERY GOOD
Symmetry	EXCELLENT
Fluorescence	NONE
Inscription(s)	15 LG639484062

Comments: This Laboratory Grown Diamond was created by Chemical Vapor Deposition (CVD) growth process.

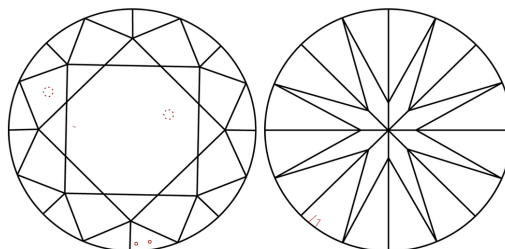
Indications of post-growth treatment.

LG639484062
Report verification at lgi.org

PROPORTIONS

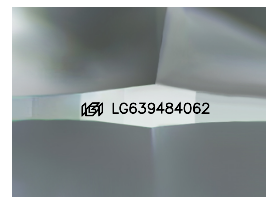


CLARITY CHARACTERISTICS



KEY TO SYMBOLS

Red symbols indicate internal characteristics.
Green symbols indicate external characteristics.



Sample Image Used

COLOR

D E F G H I J Faint Very Light Light

CLARITY

IF	VVS ^{1,2}	VS ^{1,2}	SI ^{1,2}	I ^{1,3}
Internally Flawless	Very Very Slightly Included	Very Slightly Included	Slightly Included	Included



© IGI 2020, International Gemological Institute

FD - 10 20

www.igi.org

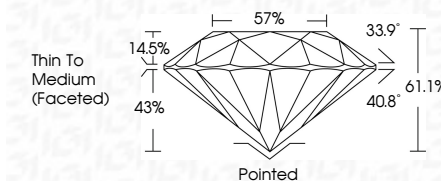
LABORATORY GROWN DIAMOND REPORT



July 2, 2024	
IGI Report Number	LG639484062
Description	LABORATORY GROWN DIAMOND
Shape and Cutting Style	ROUND BRILLIANT
Measurements	9.30 - 9.35 X 5.70 MM

GRADING RESULTS

Carat Weight	3.01 CARATS
Color Grade	FANCY VIVID BLUE
Clarity Grade	VS 2
Cut Grade	IDEAL



ADDITIONAL GRADING INFORMATION

Polish	VERY GOOD
Symmetry	EXCELLENT
Fluorescence	NONE
Inscription(s)	 LG-639484062

Comments: This Laboratory Grown Diamond was created by Chemical Vapor Deposition (CVD) growth process.
Indications of post-growth treatment.



JULY 2, 2024 GI Report No. LGS3948402 ROUND BRILLANT	3.01 CARATS Color Weight 9.30 - 9.35 X 5.70 MM Color Grade Fancy Very Blue VS 2 IDEAL 611% 57% Thin to Medium (Faceted)	Polished Very Good EXCELLENT NONE #61 LGS3948402	Comments: This is a Very Good Diamond was treated by Chemical Vapor Deposition (CVD) growth process. Indications of post-growth treatment.
--	---	--	--