

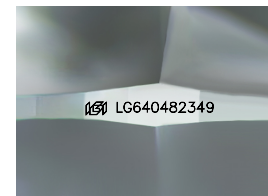
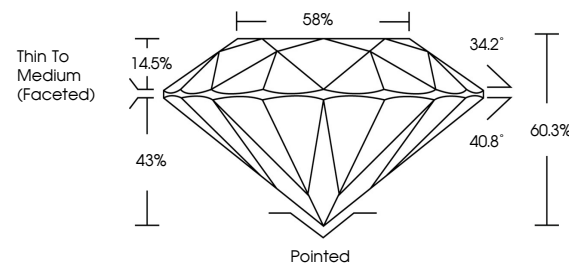


ELECTRONIC COPY

LABORATORY GROWN DIAMOND REPORT

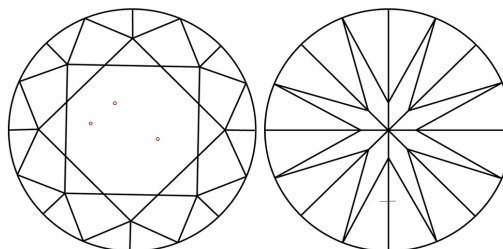
LG640482349
Report verification at igi.org

PROPORTIONS



Sample Image Used

CLARITY CHARACTERISTICS



KEY TO SYMBOLS

Red symbols indicate internal characteristics.
Green symbols indicate external characteristics.

COLOR

D E F G H I J Faint Very Light Light

CLARITY

IF	VS ^{1,2}	VS ^{1,2}	SI ^{1,2}	I ^{1,3}
Internally Flawless	Very Very Slightly Included	Very Slightly Included	Slightly Included	Included

LABORATORY GROWN DIAMOND REPORT



June 20, 2024

IGI Report Number **LG640482349**Description **LABORATORY GROWN DIAMOND**Shape and Cutting Style **ROUND BRILLIANT**

Measurements 9.87 - 9.91 X 5.96 MM

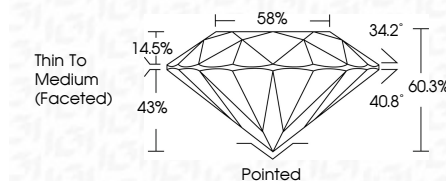
GRADING RESULTS

Carat Weight **3.60 CARATS**

Color Grade G

Clarity Grade SI 1

Cut Grade **IDEAL**



ADDITIONAL GRADING INFORMATION

Polish EXCELLENT

Symmetry **EXCELLENT**Fluorescence **NONE**Inscription(s) LG640482349

Comments: This Laboratory Grown Diamond was created by Chemical Vapor Deposition (CVD) growth process.
Type IIa



© IGI 2020, International Gemological Institute

FD - 10 20

www.igi.org

THIS DOCUMENT WAS PRODUCED WITH THE FOLLOWING SECURITY MEASURES: SPECIAL DOCUMENT PAPER, INK SCREENS, WATERMARK BACKGROUND DESIGNS, HOLOGRAM AND OTHER SECURITY FEATURES NOT LISTED AND DO EXCEED DOCUMENT SECURITY INDUSTRY GUIDELINES

June 20, 2024
GI Report No LG640482349
ROUND BRILLIANT

8.87 - 9.91 X 5.96 MM	3.60 CARATS	G	S I	IDEAL	60.9%	58%	Thin To Medium (fractured)	Pointed
Carat Weight								EXCELLENT
Color Grade								EXCELLENT
Clarity Grade								NONE
Cut Grade								Symmetry
Depth								Fluorescence
Table								
Girdle								
Culet								
Polish								
Symmetry								
Fluorescence								

Comments:
This Laboratory Grown Diamond was
created by Chemical Vapor Deposition
(CVD) growth process.