

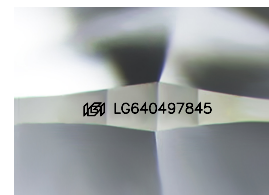
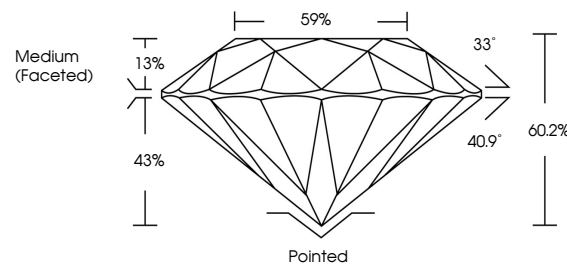


ELECTRONIC COPY

LABORATORY GROWN DIAMOND REPORT

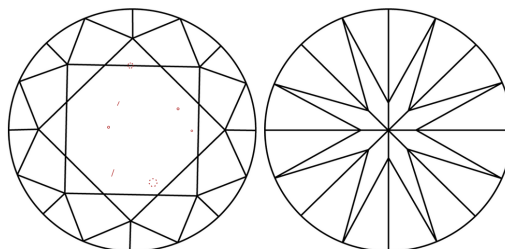
LG640497845
Report verification at igi.org

PROPORTIONS



Sample Image Used

CLARITY CHARACTERISTICS



KEY TO SYMBOLS

Red symbols indicate internal characteristics.
Green symbols indicate external characteristics.

COLOR

D E F G H I J Faint Very Light Light

CLARITY

IF WS¹⁻² VS¹⁻² SI¹⁻² I¹⁻³

Internally Flawless	Very Very Slightly Included	Very Slightly Included	Slightly Included	Included
------------------------	--------------------------------	---------------------------	----------------------	----------

LABORATORY GROWN DIAMOND REPORT



June 20, 2024

IGI Report Number **LG640497845**Description **LABORATORY GROWN DIAMOND**Shape and Cutting Style **ROUND BRILLIANT**

Measurements 7.45 - 7.49 X 4.50 MM

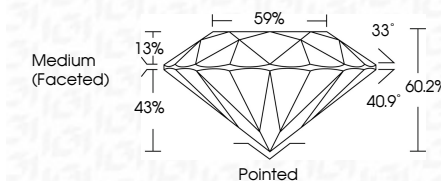
GRADING RESULTS

Carat Weight **1.55 CARAT**

Color Grade	F
-------------	---

Clarity Grade VS 1

Cut Grade **IDEAL**



ADDITIONAL GRADING INFORMATION

Polish **EXCELLENT**Symmetry **EXCELLENT**Fluorescence **NONE**Inscription(s)  LG640497845

Comments: This Laboratory Grown Diamond was created by Chemical Vapor Deposition (CVD) growth process.

Type IIa



June 29, 2024	Carat Weight	1.55 CARAT
GI Report No. LG54097845	Color Grade	F
ROUND BRILLIANT	Clarity Grade	VS 1
2.45 x 1.49 x 4.50 MM	Depth	IDEAL
	Table	60.2%
	Grade	59%
		Medium (frosted)
	Culet	Pointed
	Polish	EXCELLENT
	Symmetry	EXCELLENT
	Fluorescence	NONE
	Inscription(s)	#61 LG54097845
Comments:		
This Laboratory Grown Diamond was created by Chemical Vapor Deposition (CVD) growth process.		
Type IIA		

