

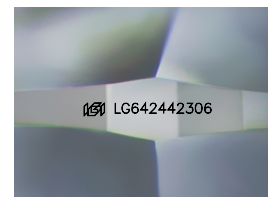
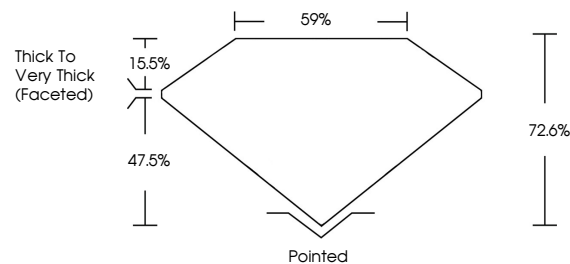


**ELECTRONIC COPY**

## LABORATORY GROWN DIAMOND REPORT

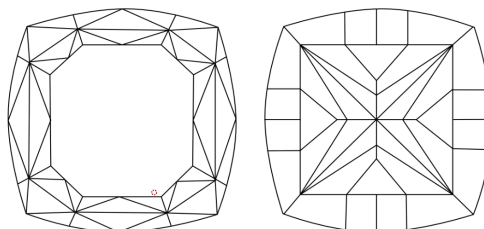
LG642442306  
Report verification at [igi.org](http://igi.org)

## PROPORTIONS



Sample Image Used

## CLARITY CHARACTERISTICS



### KEY TO SYMBOLS

Red symbols indicate internal characteristics.  
Green symbols indicate external characteristics.

## COLOR

D E F G H I J Faint Very Light Light

## CLARITY

IF	VVS <sup>1-2</sup>	VS <sup>1-2</sup>	SI <sup>1-2</sup>	I <sup>1-3</sup>
Internally Flawless	Very Very Slightly Included	Very Slightly Included	Slightly Included	Included



© IGI 2020, International Gemological Institute

FD - 10 20

**www.igi.org**

## LABORATORY GROWN DIAMOND REPORT



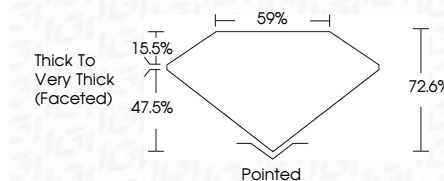
July 11, 2024

IGI Report Number **LG642442306**Description **LABORATORY GROWN DIAMOND**Shape and Cutting Style **SQUARE CUSHION MODIFIED  
BRILLIANT**

Measurements 7.66 X 7.37 X 5.35 MM

## GRADING RESULTS

Carat Weight 2.92 CARATS

Color Grade **FANCY INTENSE YELLOW**Clarity Grade WS 2

### ADDITIONAL GRADING INFORMATION

Polish **EXCELLENT**Symmetry **EXCELLENT**Fluorescence **NONE**Inscription(s)  LG642442306

Comments: This Laboratory Grown Diamond was created by Chemical Vapor Deposition (CVD) growth process.

[illegible]