

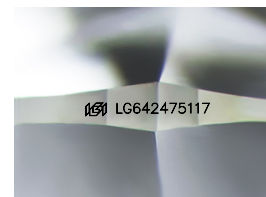
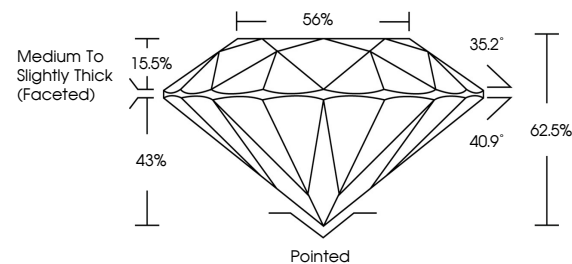


**ELECTRONIC COPY**

## LABORATORY GROWN DIAMOND REPORT

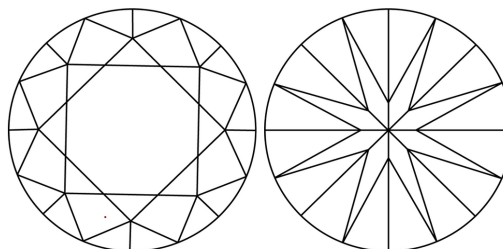
LG642475117  
Report verification at [igi.org](http://igi.org)

## PROPORTIONS



Sample Image Used

## CLARITY CHARACTERISTICS



## KEY TO SYMBOLS

Red symbols indicate internal characteristics.  
Green symbols indicate external characteristics.

## COLOR

D E F G H I J Faint Very Light Light

## CLARITY

IF	VVS <sup>1-2</sup>	VS <sup>1-2</sup>	SI <sup>1-2</sup>	I <sup>1-3</sup>
Internally Flawless	Very Very Slightly Included	Very Slightly Included	Slightly Included	Included



© IGI 2020, International Gemological Institute

FD - 10 20

**www.igi.org**

## LABORATORY GROWN DIAMOND REPORT



July 9, 2024

IGI Report Number **LG642475117**Description **LABORATORY GROWN DIAMOND**Shape and Cutting Style **ROUND BRILLIANT**

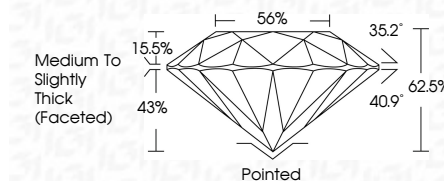
Measurements 9.27 - 9.31 X 5.81 MM

## GRADING RESULTS

Carat Weight **3.10 CARATS**

Color Grade GClarity Grade WS 2

Cut Grade **IDEAL**



### ADDITIONAL GRADING INFORMATION

Polish **EXCELLENT**Symmetry **EXCELLENT**Fluorescence **NONE**Inscription(s)  LG642475117

Comments: This Laboratory Grown Diamond was created by Chemical Vapor Deposition (CVD) growth process.  
Type IIa



July 9, 2024  
 IGI Report No LG642475117  
 ROUND BRILLIANT

2.27 - 9.31 X 5.81 MM	3.10 CARATS	G
Color Grade	VVS 2	Pointed
Clarity Grade	IDEAL	EXCELLENT
Cut Grade	62.0%	EXCELLENT
Depth	56%	NONE
Table	Medium to Slightly Thick (Faceted)	
Grade		
Culet		
Polish		
Symmetry		
Fluorescence		

**Comments:**  
This Laboratory Grown Diamond was  
created by Chemical Vapor Deposition  
(CVD) growth process.