



# INTERNATIONAL GEMOLOGICAL INSTITUTE

## LABORATORY GROWN DIAMOND REPORT

July 8, 2024  
IGI Report Number **LG642481156**  
Description **LABORATORY GROWN DIAMOND**  
Shape and Cutting Style **ROUND BRILLIANT**  
Measurements **6.28 - 6.30 X 3.85 MM**

### GRADING RESULTS

Carat Weight **0.93 CARAT**  
Color Grade **D**  
Clarity Grade **VVS 2**  
Cut Grade **IDEAL**

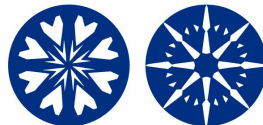
### ADDITIONAL GRADING INFORMATION

Polish **EXCELLENT**  
Symmetry **EXCELLENT**  
Fluorescence **NONE**  
Inscription(s) **IGI LG642481156**

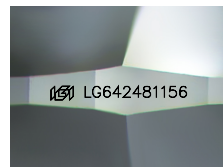
Comments: HEARTS & ARROWS  
This Laboratory Grown Diamond was created by Chemical Vapor  
Deposition (CVD) growth process.  
Type IIa

ELECTRONIC COPY

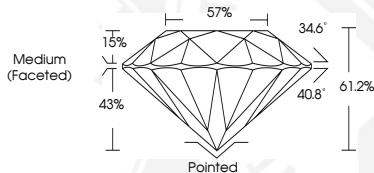
LG642481156



HEARTS & ARROWS



Sample Image Used



July 8, 2024  
IGI Report Number **LG642481156**  
**ROUND BRILLIANT**  
**LABORATORY GROWN DIAMOND**  
**6.28 - 6.30 X 3.85 MM**  
Carat Weight **0.93 CARAT**  
Color Grade **D**  
Clarity Grade **VVS 2**  
Cut Grade **IDEAL**  
Polish **EXCELLENT**  
Symmetry **EXCELLENT**  
Fluorescence **NONE**  
Inscription(s) **IGI LG642481156**  
Comments: HEARTS & ARROWS This  
Laboratory Grown Diamond was  
created by Chemical Vapor  
Deposition (CVD) growth process.  
Type IIa



July 8, 2024  
IGI Report Number **LG642481156**  
**ROUND BRILLIANT**  
**LABORATORY GROWN DIAMOND**  
**6.28 - 6.30 X 3.85 MM**  
Carat Weight **0.93 CARAT**  
Color Grade **D**  
Clarity Grade **VVS 2**  
Cut Grade **IDEAL**  
Polish **EXCELLENT**  
Symmetry **EXCELLENT**  
Fluorescence **NONE**  
Inscription(s) **IGI LG642481156**  
Comments: HEARTS & ARROWS This  
Laboratory Grown Diamond was  
created by Chemical Vapor  
Deposition (CVD) growth process.  
Type IIa



THIS DOCUMENT WAS PRODUCED WITH THE FOLLOWING SECURITY MEASURES: SPECIAL DOCUMENT PAPER, INK SCREENS, WATERMARK, BACKGROUND DESIGNS, HOLOGRAM AND OTHER SECURITY FEATURES NOT LISTED AND DO EXCEED DOCUMENT SECURITY INDUSTRY GUIDELINES.

For terms & conditions and to verify this report, please visit [www.igi.org](http://www.igi.org)