



**ELECTRONIC COPY**

## LABORATORY GROWN DIAMOND REPORT

July 16, 2024	
IGI Report Number	LG642481240
Description	LABORATORY GROWN DIAMOND
Shape and Cutting Style	SQUARE CUSHION MODIFIED BRILLIANT
Measurements	8.25 X 7.90 X 5.67 MM

## GRADING RESULTS

Carat Weight	3.50 CARATS
Color Grade	FANCY INTENSE YELLOW
Clarity Grade	VS 1

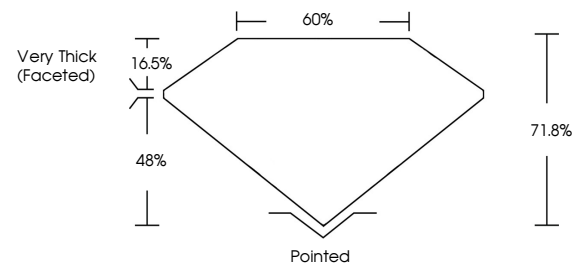
### ADDITIONAL GRADING INFORMATION

Polish	EXCELLENT
Symmetry	EXCELLENT
Fluorescence	NONE
Inscription(s)	 LG642481240

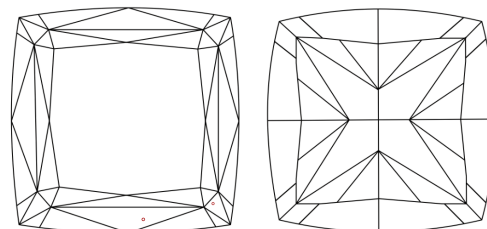
Comments: This Laboratory Grown Diamond was created by Chemical Vapor Deposition (CVD) growth process.

LG642481240  
Report verification at [igi.org](https://igi.org)

## PROPORTIONS

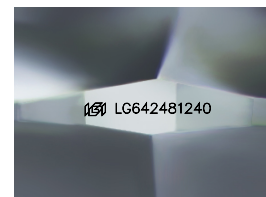


## CLARITY CHARACTERISTICS



## KEY TO SYMBOLS

Red symbols indicate internal characteristics.  
Green symbols indicate external characteristics.



Sample Image Used

## COLOR

D E F G H I J Faint Very Light Light

## CLARITY

IF	VVS <sup>1-2</sup>	VS <sup>1-2</sup>	SI <sup>1-2</sup>	I <sup>1-3</sup>
Internally Flawless	Very Very Slightly Included	Very Slightly Included	Slightly Included	Included



© IGI 2020, International Gemological Institute

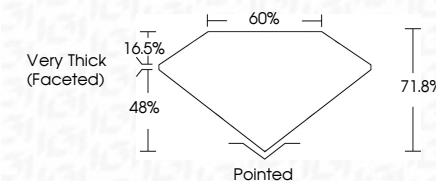
FD - 10 20

**www.igi.org**

## LABORATORY GROWN DIAMOND REPORT



July 16, 2024	
IGI Report Number	LG642481240
Description	LABORATORY GROWN DIAMOND
Shape and Cutting Style	SQUARE CUSHION MODIFIED BRILLIANT
Measurements	8.25 X 7.90 X 5.67 MM
GRADING RESULTS	
Carat Weight	3.50 CARATS
Color Grade	FANCY INTENSE YELLOW
Clarity Grade	VS 1



### ADDITIONAL GRADING INFORMATION

Polish	EXCELLENT
Symmetry	EXCELLENT
Fluorescence	NONE
Inscription(s)	(15) LG642481240

Comments: This Laboratory Grown Diamond was created by Chemical Vapor Deposition (CVD) growth process.



<b>Date:</b>	July 16, 2024
<b>Report No.:</b>	LG-62481240
<b>Description:</b>	SQUARE CUSHION MODIFIED BRILLIANT
<b>Weight:</b>	2.25 X 2.25 X 1.90 X 5.07 MM.
<b>Color:</b>	FANCY INTENSE YELLOW
<b>Clarity:</b>	VS
<b>Cut:</b>	Very Thick (Faceted)
<b>Polish:</b>	Excellent
<b>Symmetry:</b>	Excellent
<b>Fluorescence:</b>	None
<b>Treatment(s):</b>	(S) LG-62481240

**Comments:**  
This Laboratory Grown Diamond was analyzed by chemical vapor deposition (CVD).