



INTERNATIONAL GEMOLOGICAL INSTITUTE

LABORATORY GROWN DIAMOND REPORT

July 8, 2024
IGI Report Number **LG642482933**
Description **LABORATORY GROWN DIAMOND**
Shape and Cutting Style **ROUND BRILLIANT**
Measurements **5.55 - 5.59 X 3.46 MM**

GRADING RESULTS

Carat Weight **0.66 CARAT**
Color Grade **D**
Clarity Grade **VVS 1**
Cut Grade **IDEAL**

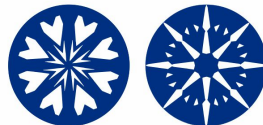
ADDITIONAL GRADING INFORMATION

Polish **EXCELLENT**
Symmetry **EXCELLENT**
Fluorescence **NONE**
Inscription(s) **IGI LG642482933**

Comments: HEARTS & ARROWS
This Laboratory Grown Diamond was created by Chemical Vapor
Deposition (CVD) growth process.
Type IIa

ELECTRONIC COPY

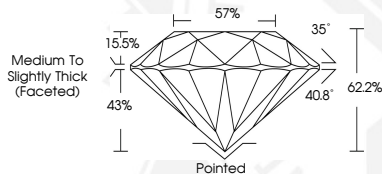
LG642482933



HEARTS & ARROWS



Sample Image Used



July 8, 2024
IGI Report Number **LG642482933**
ROUND BRILLIANT
LABORATORY GROWN DIAMOND
5.55 - 5.59 X 3.46 MM
Carat Weight **0.66 CARAT**
Color Grade **D**
Clarity Grade **VVS 1**
Cut Grade **IDEAL**
Polish **EXCELLENT**
Symmetry **EXCELLENT**
Fluorescence **NONE**
Inscription(s) **IGI LG642482933**
Comments: HEARTS & ARROWS This
Laboratory Grown Diamond was
created by Chemical Vapor
Deposition (CVD) growth process.
Type IIa



July 8, 2024
IGI Report Number **LG642482933**
ROUND BRILLIANT
LABORATORY GROWN DIAMOND
5.55 - 5.59 X 3.46 MM
Carat Weight **0.66 CARAT**
Color Grade **D**
Clarity Grade **VVS 1**
Cut Grade **IDEAL**
Polish **EXCELLENT**
Symmetry **EXCELLENT**
Fluorescence **NONE**
Inscription(s) **IGI LG642482933**
Comments: HEARTS & ARROWS This
Laboratory Grown Diamond was
created by Chemical Vapor
Deposition (CVD) growth process.
Type IIa



THIS DOCUMENT WAS PRODUCED WITH THE FOLLOWING SECURITY MEASURES: SPECIAL DOCUMENT PAPER, INK SCREENS, WATERMARK, BACKGROUND DESIGNS, HOLOGRAM AND OTHER SECURITY FEATURES NOT LISTED AND DO EXCEED DOCUMENT SECURITY INDUSTRY GUIDELINES.

For terms & conditions and to verify this report, please visit www.igi.org