



# INTERNATIONAL GEMOLOGICAL INSTITUTE

## LABORATORY GROWN DIAMOND REPORT

July 8, 2024  
IGI Report Number **LG642482942**  
Description **LABORATORY GROWN DIAMOND**  
Shape and Cutting Style **ROUND BRILLIANT**  
Measurements **5.48 - 5.50 X 3.38 MM**

### GRADING RESULTS

Carat Weight **0.63 CARAT**  
Color Grade **D**  
Clarity Grade **VVS 1**  
Cut Grade **EXCELLENT**

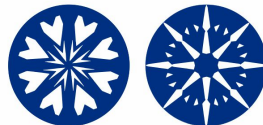
### ADDITIONAL GRADING INFORMATION

Polish **EXCELLENT**  
Symmetry **EXCELLENT**  
Fluorescence **NONE**  
Inscription(s) **IGI LG642482942**

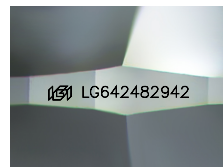
Comments: HEARTS & ARROWS  
This Laboratory Grown Diamond was created by Chemical Vapor  
Deposition (CVD) growth process.  
Type IIa

ELECTRONIC COPY

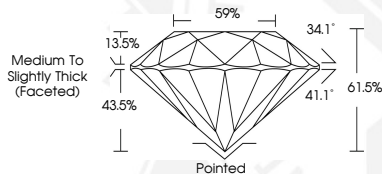
LG642482942



HEARTS & ARROWS



Sample Image Used



July 8, 2024  
IGI Report Number **LG642482942**  
ROUND BRILLIANT  
LABORATORY GROWN DIAMOND  
5.48 - 5.50 X 3.38 MM  
Carat Weight **0.63 CARAT**  
Color Grade **D**  
Clarity Grade **VVS 1**  
Cut Grade **EXCELLENT**  
Polish **EXCELLENT**  
Symmetry **EXCELLENT**  
Fluorescence **NONE**  
Inscription(s) **IGI LG642482942**  
Comments: HEARTS & ARROWS This  
Laboratory Grown Diamond was  
created by Chemical Vapor  
Deposition (CVD) growth process.  
Type IIa



July 8, 2024  
IGI Report Number **LG642482942**  
ROUND BRILLIANT  
LABORATORY GROWN DIAMOND  
5.48 - 5.50 X 3.38 MM  
Carat Weight **0.63 CARAT**  
Color Grade **D**  
Clarity Grade **VVS 1**  
Cut Grade **EXCELLENT**  
Polish **EXCELLENT**  
Symmetry **EXCELLENT**  
Fluorescence **NONE**  
Inscription(s) **IGI LG642482942**  
Comments: HEARTS & ARROWS This  
Laboratory Grown Diamond was  
created by Chemical Vapor  
Deposition (CVD) growth process.  
Type IIa



THIS DOCUMENT WAS PRODUCED WITH THE FOLLOWING SECURITY MEASURES: SPECIAL DOCUMENT PAPER, INK SCREENS, WATERMARK, BACKGROUND DESIGNS, HOLOGRAM AND OTHER SECURITY FEATURES NOT LISTED AND DO EXCEED DOCUMENT SECURITY INDUSTRY GUIDELINES.

For terms & conditions and to verify this report, please visit [www.igi.org](http://www.igi.org)