



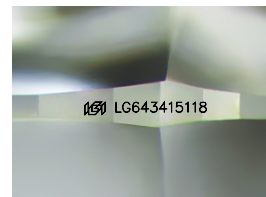
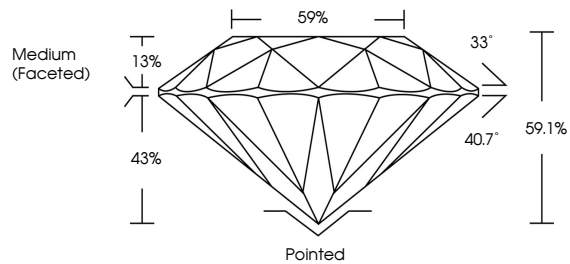
**INTERNATIONAL  
GEMOLOGICAL  
INSTITUTE**

**ELECTRONIC COPY**

## LABORATORY GROWN DIAMOND REPORT

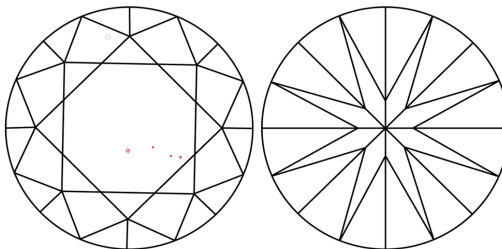
LG643415118  
Report verification at [igi.org](https://igi.org)

## PROPORTIONS



Sample Image Used

## CLARITY CHARACTERISTICS



## KEY TO SYMBOLS

Red symbols indicate internal characteristics.  
Green symbols indicate external characteristics.

## COLOR

D E F G H I J Faint Very Light Light

## CLARITY

| IF                  | WVS <sup>1-2</sup>          | VS <sup>1-2</sup>      | SI <sup>1-2</sup> | I <sup>1-3</sup> |
|---------------------|-----------------------------|------------------------|-------------------|------------------|
| Internally Flawless | Very Very Slightly Included | Very Slightly Included | Slightly Included | Included         |



© IGI 2020, International Gemological Institute

FD - 10 20

**www.igi.org**

LABORATORY GROWN DIAMOND REPORT



July 11, 2024

IGI Report Number **LG643415118**

|             |                          |
|-------------|--------------------------|
| Description | LABORATORY GROWN DIAMOND |
|-------------|--------------------------|

Shape and Cutting Style **ROUND BRILLIANT**

Measurements 7.03 - 7.07 X 4.16 MM

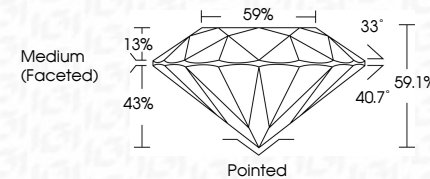
## GRADING RESULTS

Carat Weight **1.25 CARAT**

|             |   |
|-------------|---|
| Color Grade | D |
|-------------|---|

Clarity Grade VS 2

Cut Grade **IDEAL**



### ADDITIONAL GRADING INFORMATION

Polish **EXCELLENT**

Symmetry **EXCELLENT**

Fluorescence  NONEInscription(s)  LG64341511

Comments: This Laboratory Grown Diamond was created by Chemical Vapor Deposition (CVD) growth process.  
Type IIa



IG

|   |                  |
|---|------------------|
| July 11, 2024   |                  |
| IGI Report No. IGS43416118  |                  |
| ROUND BRILLIANT   |                  |
| 7.09 - 7.07 X 4.16 MM   |                  |
| Carat Weight  | 1.26 CARAT       |
| Color Grade   | D                |
| Cutty Grade   | VS 2             |
| Clarity Grade   | IDEAL            |
| Depth   | 59.1%            |
| Table   | 59%              |
| Girdle  | Medium (Faceted) |
| Culet   | Poished          |
| Facet Symmetry  | EXCELLENT        |
| Fluorescence  | EXCELLENT        |
| Inscriptions(s)   | NONE             |
|   | #GJLSA43416118   |
| Comments:   |                  |
| This Laboratory Report was created by Chemical Vapor Deposition (CVD) growth process. |                  |
| Type IIa  |                  |