



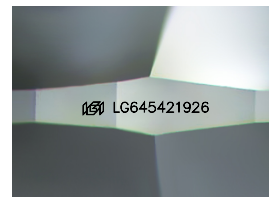
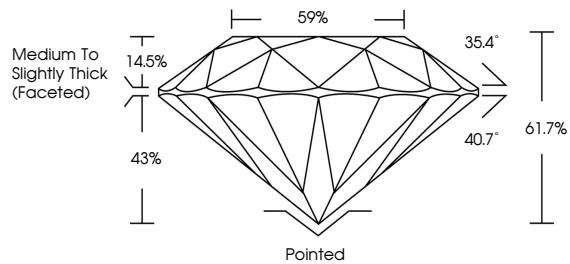
**INTERNATIONAL  
GEMOLOGICAL  
INSTITUTE**

**ELECTRONIC COPY**

## LABORATORY GROWN DIAMOND REPORT

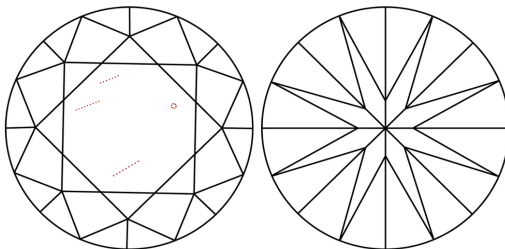
LG645421926  
Report verification at [igi.org](https://igi.org)

## PROPORTIONS



Sample Image Used

## CLARITY CHARACTERISTICS



## KEY TO SYMBOLS

Red symbols indicate internal characteristics.  
Green symbols indicate external characteristics.

## COLOR

D E F G H I J Faint Very Light Light

## CLARITY

IF	WVS <sup>1-2</sup>	VS <sup>1-2</sup>	SI <sup>1-2</sup>	I <sup>1-3</sup>
Internally Flawless	Very Very Slightly Included	Very Slightly Included	Slightly Included	Included



© IGI 2020, International Gemological Institute

FD - 10 20

LABORATORY GROWN DIAMOND REPORT



August 1, 2024

IGI Report Number **LG645421926**

Description	LABORATORY GROWN DIAMOND
-------------	--------------------------

Shape and Cutting Style **ROUND BRILLIANT**

Measurements 10.04 - 10.10 X 6.22 MM

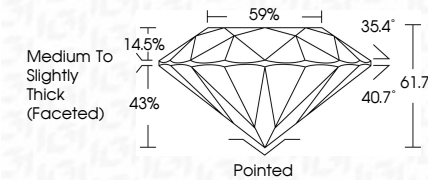
## GRADING RESULTS

Carat Weight **3.94 CARATS**

Color Grade	F
-------------	---

Clarity Grade	SI 1
---------------	------

Cut Grade **IDEAL**



### ADDITIONAL GRADING INFORMATION

Polish **EXCELLENT**Symmetry **EXCELLENT**Fluorescence **NONE**Inscription(s)  LG64542192

Comments: This Laboratory Grown Diamond was created by Chemical Vapor Deposition (CVD) growth process.  
Type IIa



IG

August 1, 2024	GI Report No.USA6421926
ROUND BRILLIANT	
10.04 - 10.10 X 6.22 MM	3.04 CARATS
Color Weight	S I
Color Grade	IDEAL
Clarity Grade	61.7%
Cut Grade	89%
Depth	Medium to Slightly Thick (focused)
Table	Partnered
Grain	EXCELLENT
	EXCELLENT
Color	NONE
Symmetry	gsm/USA6421926
Fluorescence	
Inscription(s)	
Compatibility:	
The Laboratory Grown Diamond was created by Chemical Vapor Deposition (CVD) growth process.	
Type IIa	