

ELECTRONIC COPY

LABORATORY GROWN DIAMOND REPORT

LG645441757
Report verification at igi.org

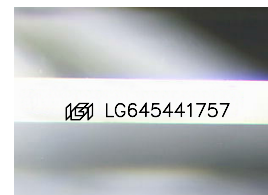
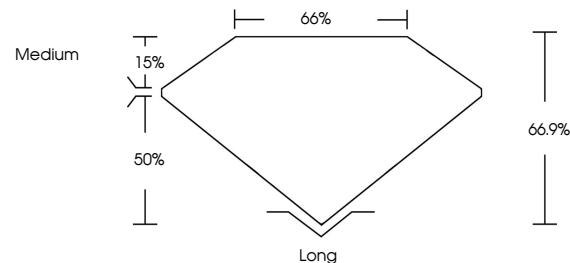
| | |
|-------------------------|--------------------------|
| October 1, 2024 | |
| IGI Report Number | LG645441757 |
| Description | LABORATORY GROWN DIAMOND |
| Shape and Cutting Style | EMERALD CUT |
| Measurements | 8.58 X 5.68 X 3.80 MM |
| GRADING RESULTS | |
| Carat Weight | 1.79 CARAT |
| Color Grade | G |
| Clarity Grade | VVS 2 |
| Cut Grade | EXCELLENT |

ADDITIONAL GRADING INFORMATION

| | |
|----------------|---|
| Polish | EXCELLENT |
| Symmetry | EXCELLENT |
| Fluorescence | NONE |
| Inscription(s) |  LG645441757 |

Comments: This Laboratory Grown Diamond was created by Chemical Vapor Deposition (CVD) growth process.
Type IIa

PROPORTIONS



Sample Image Used

COLOR

D E F G H I J Faint Very Light Light

CLARITY

IF VS¹⁻² VS¹⁻² S¹⁻² |¹⁻³

| Internally Flawless | Very Very Slightly Included | Very Slightly Included | Slightly Included | Included |
|------------------------|--------------------------------|---------------------------|----------------------|----------|
|------------------------|--------------------------------|---------------------------|----------------------|----------|

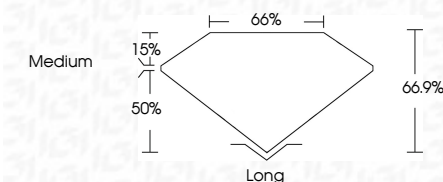
LABORATORY GROWN DIAMOND REPORT



| | |
|-------------------------|--------------------------|
| October 1, 2024 | |
| IGI Report Number | LG645441757 |
| Description | LABORATORY GROWN DIAMOND |
| Shape and Cutting Style | EMERALD CUT |
| Measurements | 8.58 X 5.68 X 3.80 MM |
| GRADING RESULTS | |
| Carat Weight | 1.79 CARAT |
| Color Grade | G |
| Clarity Grade | VVS 2 |
| Cut Grade | EXCELLENT |

ADDITIONAL GRADING INFORMATION

| | |
|---|---------------------------|
| Polish | EXCELLENT |
| Symmetry | EXCELLENT |
| Fluorescence | NONE |
| Inscription(s) | LG LG645441757 |
| <p>Comments: This Laboratory Grown Diamond was created by Chemical Vapor Deposition (CVD) growth process.</p> <p>Type IIa</p> | |



October 1, 2024
IGI Report No LG645441757
EMERALD CITE

| | | | |
|---------------------|------------------------------|----------------------|---------------------|
| GENERAID CUT | 6.09 X 6.08 X 3.80 MM | VVS 2 | Long |
| Carat Weight | Color Grade | Clarity Grade | Cut |
| 1.79 CARAT | G | EXCELLENT | EXCELLENT |
| | | 66.9% | EXCELLENT |
| | | 66% | NONE |
| | | Medium | FLUORESCENCE |
| | | | None |
| | | | Polish |
| | | | Symmetry |
| | | | Fluorescence |
| | | | None |

Comments:
This Laboratory Grown Diamond was created by Chemical Vapor Deposition (CVD) growth process.