

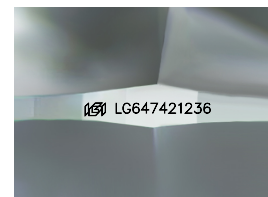
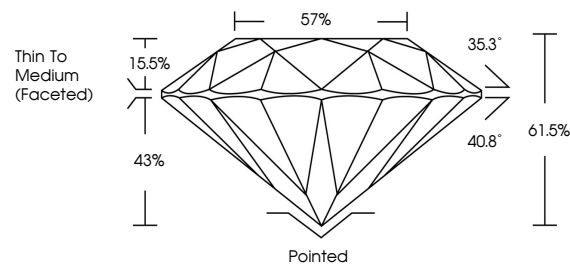


ELECTRONIC COPY

LABORATORY GROWN DIAMOND REPORT

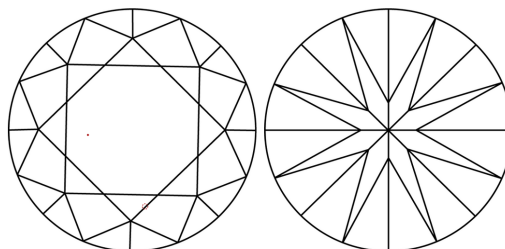
LG647421236
Report verification at igi.org

PROPORTIONS



Sample Image Used

CLARITY CHARACTERISTICS



KEY TO SYMBOLS

Red symbols indicate internal characteristics.
Green symbols indicate external characteristics.

COLOR

D E F G H I J Faint Very Light Light

CLARITY

IF	VVS ^{1,2}	VS ^{1,2}	SI ^{1,2}	I ^{1,3}
Internally Flawless	Very Very Slightly Included	Very Slightly Included	Slightly Included	Included



© IGI 2020, International Gemological Institute

FD - 10 20

www.igi.org

LABORATORY GROWN DIAMOND REPORT



August 7, 2024

IGI Report Number **LG647421236**Description **LABORATORY GROWN DIAMOND**Shape and Cutting Style **ROUND BRILLIANT**

Measurements 7.16 - 7.21 X 4.42 MM

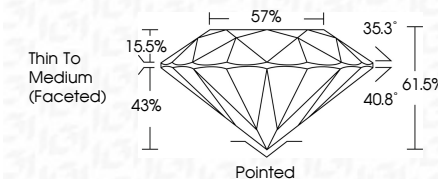
GRADING RESULTS

Carat Weight **1.41 CARAT**

Color Grade F

Clarity Grade **VVS 2**

Cut Grade **IDEAL**



ADDITIONAL GRADING INFORMATION

Polish **EXCELLENT**Symmetry **EXCELLENT**Fluorescence NONEInscription(s) LG647421236

Comments: This Laboratory Grown Diamond was created by Chemical Vapor Deposition (CVD) growth process.
Type IIa



August 7, 2024	GI Report No.IG647421236
ROUND BRILLIANT	
16.16 - 7.21 X 4.42 MM	
Carat Weight	1.41 CARAT
Color Grade	F 2
Clarity Grade	VVS 2
Cut Grade	IDEAL
Depth	61.5%
Table	57%
Girdle	Thin to Medium (focused)
Culet	Pointed
Polish	EXCELLENT
Symmetry	EXCELLENT
Fluorescence	NONE
Inscription(s)	#61IG647421236
Comments:	
	This Laboratory Grown Diamond was created by Chemical Vapor Deposition (CVD) growth process.
	Type IIa