

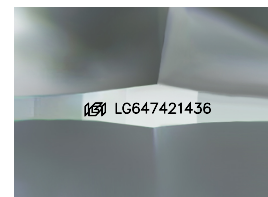
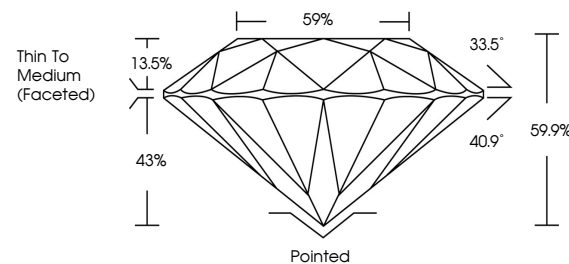


**ELECTRONIC COPY**

## LABORATORY GROWN DIAMOND REPORT

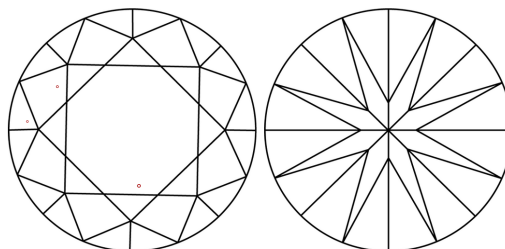
LG647421436  
Report verification at [igi.org](https://igi.org)

## PROPORTIONS



Sample Image Used

## CLARITY CHARACTERISTICS



## KEY TO SYMBOLS

Red symbols indicate internal characteristics.  
Green symbols indicate external characteristics.

## COLOR

D E F G H I J Faint Very Light Light

## CLARITY

IF	VVS <sup>1-2</sup>	VS <sup>1-2</sup>	SI <sup>1-2</sup>	I <sup>1-3</sup>
Internally Flawless	Very Very Slightly Included	Very Slightly Included	Slightly Included	Included



© IGI 2020, International Gemological Institute

FD - 10 20

## LABORATORY GROWN DIAMOND REPORT



August 9, 2024

IGI Report Number **LG647421436**Description **LABORATORY GROWN DIAMOND**Shape and Cutting Style **ROUND BRILLIANT**

Measurements 7.72 - 7.74 X 4.63 MM

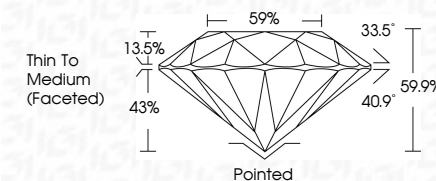
## GRADING RESULTS

Carat Weight **1.69 CARAT**

Color Grade E

Clarity Grade VS 1

Cut Grade **IDEAL**



### ADDITIONAL GRADING INFORMATION

Polish **EXCELLENT**Symmetry **EXCELLENT**Fluorescence **NONE**Inscription(s)  LG647421436

Comments: This Laboratory Grown Diamond was created by Chemical Vapor Deposition (CVD) growth process.  
Type IIa



AUGUST 9, 2024
Gf report No G647421436
ROUND BRILLIANT
7.78 - 7.74 X 4.63 MM
Carat Weight
Color Grade
Clarity Grade
Cut Grade
Depth
Tabelle
Grade
Thin To Medium (faceted)
Vs 1
IDEAL
58%
59%
Painted
EXCELLENT
EXCELLENT
NONE
#GJ G647421436
Comments:
This Laboratory Grown Diamond was created by Chemical Vapor Deposition (CVD) growth process.
Type IIA