

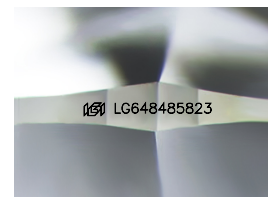
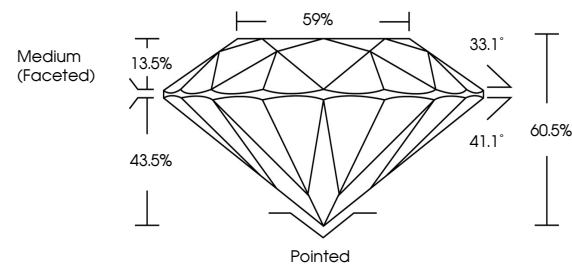


ELECTRONIC COPY

LABORATORY GROWN DIAMOND REPORT

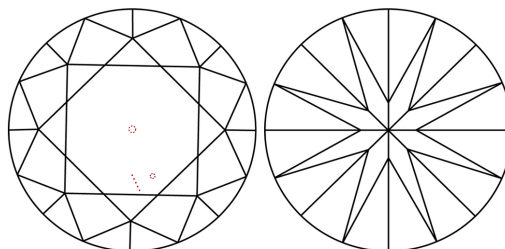
LG648485823
Report verification at igi.org

PROPORTIONS



Sample Image Used

CLARITY CHARACTERISTICS



KEY TO SYMBOLS

Red symbols indicate internal characteristics.
Green symbols indicate external characteristics.

COLOR

D E F G H I J Faint Very Light Light

CLARITY

IF	VVS ¹⁻²	VS ¹⁻²	SI ¹⁻²	I ¹⁻³
Internally Flawless	Very Very Slightly Included	Very Slightly Included	Slightly Included	Included



© IGI 2020, International Gemological Institute

FD - 10 20

www.igi.org

LABORATORY GROWN DIAMOND REPORT



August 13, 2024

IGI Report Number **LG648485823**Description **LABORATORY GROWN DIAMOND**Shape and Cutting Style **ROUND BRILLIANT**

Measurements 7.65 - 7.69 X 4.64 MM

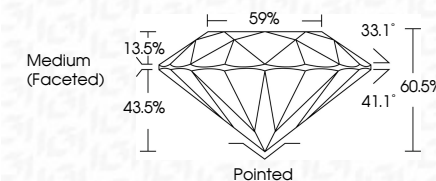
GRADING RESULTS

Carat Weight 1.67 CARAT

Color Grade E

Clarity Grade VS 1

Cut Grade **IDEAL**



ADDITIONAL GRADING INFORMATION

Polish **EXCELLENT**Symmetry **EXCELLENT**Fluorescence **NONE**Inscription(s) LG648485823

Comments: This Laboratory Grown Diamond was created by Chemical Vapor Deposition (CVD) growth process.
Type IIa



August 13, 2024	
GI Report No: LSG4648923	
ROUND BRILLIANT	
1.65 - 7.69 X 4.64 MM	
Carat Weight	1.67 CARAT
Color Grade	E
Clarity Grade	VS 1
Cut Grade	IDEAL
Depth	60.5%
Table	59%
Girdle	Medium (Faceted)
Culet	Pointed
Polish	EXCELLENT
Symmetry	EXCELLENT
Fluorescence	NONE
Inscriptions(s)	lgf LSG4648923
Comments:	
The Laboratory Grown Diamond was treated with a High Pressure High Temperature (HPHT) growth process. type IIa	