

ELECTRONIC COPY

LABORATORY GROWN DIAMOND REPORT

October 23, 2024	
IGI Report Number	LG651425802
Description	LABORATORY GROWN DIAMOND
Shape and Cutting Style	ROUND BRILLIANT
Measurements	6.68 - 6.71 X 4.18 MM

GRADING RESULTS

Carat Weight	1.16 CARAT
Color Grade	D
Clarity Grade	VVS 2
Cut Grade	IDEAL

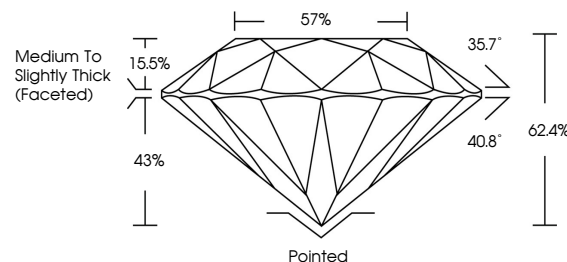
ADDITIONAL GRADING INFORMATION

Polish	EXCELLENT
Symmetry	EXCELLENT
Fluorescence	NONE
Inscription(s)	LG651425802

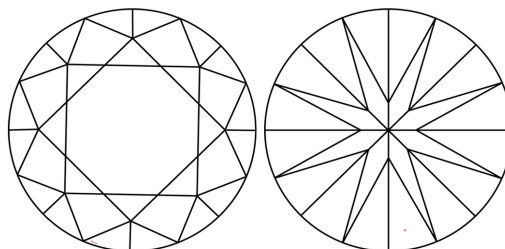
Comments: This Laboratory Grown Diamond was created by Chemical Vapor Deposition (CVD) growth process.
Type IIa

LG651425802
Report verification at lqi.org

PROPORTIONS

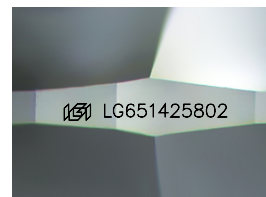


CLARITY CHARACTERISTICS



KEY TO SYMBOLS

Red symbols indicate internal characteristics.
Green symbols indicate external characteristics.



Sample Image Used

COLOR

D E F G H I J Faint Very Light Light

CLARITY

IF WS¹⁻² VS¹⁻² SI¹⁻² |¹⁻³

Internally Flawless	Very Very Slightly Included	Very Slightly Included	Slightly Included	Included
------------------------	--------------------------------	---------------------------	----------------------	----------



© IGI 2020, International Gemological Institute

FD - 10 20

www.igi.org

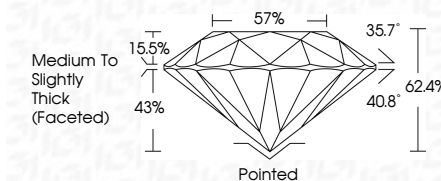
LABORATORY GROWN DIAMOND REPORT



October 23, 2024	
IGI Report Number	LG651425802
Description	LABORATORY GROWN DIAMOND
Shape and Cutting Style	ROUND BRILLIANT
Measurements	6.68 - 6.71 X 4.18 MM

GRADING RESULTS

Carat Weight	1.16 CARAT
Color Grade	D
Clarity Grade	VVS 2
Cut Grade	IDEAL



ADDITIONAL GRADING INFORMATION

Polish	EXCELLENT
Symmetry	EXCELLENT
Fluorescence	NONE
Inscription(s)	 LG651425802
<p>Comments: This Laboratory Grown Diamond was created by Chemical Vapor Deposition (CVD) growth process.</p> <p>Type IIa</p>	



IG

October 23, 2024	
GI Report No: LG61425892	
ROUND BRILLIANT	
6.68 - 6.71 X 4.18 MM	
Color Weight	1.16 CARAT
Color Grade	D
Clarity Grade	VVS 2
Cut Grade	IDEAL
Depth	62.4%
Table	57%
Girdle	Medium to Slightly Thick (Faceted)
Culet	Pointed
Polish	EXCELLENT
Symmetry	B EXCELLENT
Fluorescence	NONE
Inscriptions(s)	1691 LG61425892
Comments: This is a Natural, Fancy Cut, Grown Diamond was created by Chemical Vapor Deposition (CVD) growth process. Type IIa	