



# INTERNATIONAL GEMOLOGICAL INSTITUTE

ELECTRONIC COPY

LG651467084



September 19, 2024

IGI Report Number **LG651467084**  
ROUND BRILLIANT  
LABORATORY GROWN DIAMOND  
4.32 - 4.36 X 2.59 MM

Carat Weight **0.30 CARAT**  
Color Grade **FANCY VIVID PINK**  
Clarity Grade **VVS 2**  
Cut Grade **VERY GOOD**  
Polish **EXCELLENT**  
Symmetry **GOOD**  
Fluorescence **SLIGHT**  
Inscription(s) **IGI LG651467084**

Comments: This Laboratory Grown Diamond was created by Chemical Vapor Deposition (CVD) growth process. Indications of post-growth treatment.

## LABORATORY GROWN DIAMOND REPORT

September 19, 2024

IGI Report Number **LG651467084**

Description **LABORATORY GROWN DIAMOND**

Shape and Cutting Style **ROUND BRILLIANT**

Measurements **4.32 - 4.36 X 2.59 MM**

### GRADING RESULTS

Carat Weight **0.30 CARAT**

Color Grade **FANCY VIVID PINK**

Clarity Grade **VVS 2**

Cut Grade **VERY GOOD**

### ADDITIONAL GRADING INFORMATION

Polish **EXCELLENT**

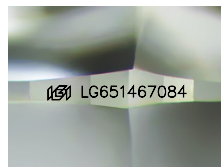
Symmetry **GOOD**

Fluorescence **SLIGHT**

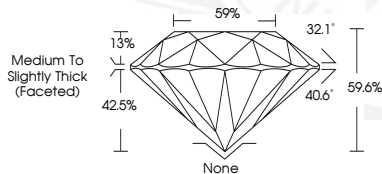
Inscription(s) **IGI LG651467084**

Comments: This Laboratory Grown Diamond was created by Chemical Vapor Deposition (CVD) growth process.

Indications of post-growth treatment.



Sample Image Used



September 19, 2024

IGI Report Number **LG651467084**  
ROUND BRILLIANT  
LABORATORY GROWN DIAMOND  
4.32 - 4.36 X 2.59 MM

Carat Weight **0.30 CARAT**  
Color Grade **FANCY VIVID PINK**  
Clarity Grade **VVS 2**  
Cut Grade **VERY GOOD**  
Polish **EXCELLENT**  
Symmetry **GOOD**  
Fluorescence **SLIGHT**  
Inscription(s) **IGI LG651467084**

Comments: This Laboratory Grown Diamond was created by Chemical Vapor Deposition (CVD) growth process. Indications of post-growth treatment.



THIS DOCUMENT WAS PRODUCED WITH THE FOLLOWING SECURITY MEASURES: SPECIAL DOCUMENT PAPER, PINK SCREENS, WATERMARK, BACKGROUND DESIGNS, HOLOGRAM AND OTHER SECURITY FEATURES NOT LISTED AND DO EXCEED DOCUMENT SECURITY INDUSTRY GUIDELINES.

For terms & conditions and to verify this report, please visit [www.igi.org](http://www.igi.org)