



ELECTRONIC COPY

LG652431585
Report verification at igi.org



September 18, 2024

IGI Report Number **LG652431585**

Description **LABORATORY GROWN DIAMOND**

Shape and Cutting Style **PRINCESS CUT**

Measurements **11.12 X 11.02 X 7.62 MM**

GRADING RESULTS

Carat Weight **8.52 CARATS**

Color Grade **H**

Clarity Grade **VS 2**

LABORATORY GROWN DIAMOND REPORT

September 18, 2024

IGI Report Number **LG652431585**

Description **LABORATORY GROWN DIAMOND**

Shape and Cutting Style **PRINCESS CUT**

Measurements **11.12 X 11.02 X 7.62 MM**

GRADING RESULTS

Carat Weight **8.52 CARATS**

Color Grade **H**

Clarity Grade **VS 2**

ADDITIONAL GRADING INFORMATION

Polish **EXCELLENT**

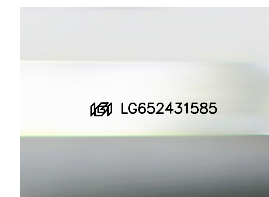
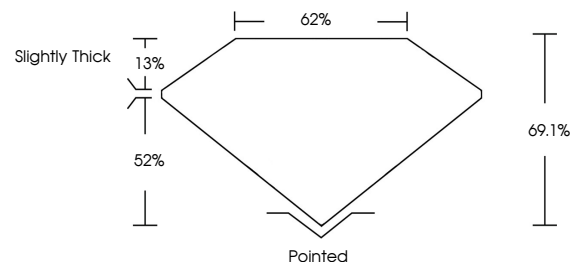
Symmetry **EXCELLENT**

Fluorescence **NONE**

Inscription(s) **IGI LG652431585**

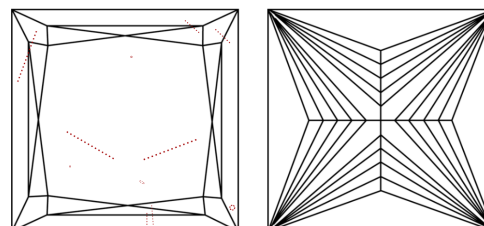
Comments: This Laboratory Grown Diamond was created by Chemical Vapor Deposition (CVD) growth process. Type IIa

PROPORTIONS



Sample Image Used

CLARITY CHARACTERISTICS



KEY TO SYMBOLS

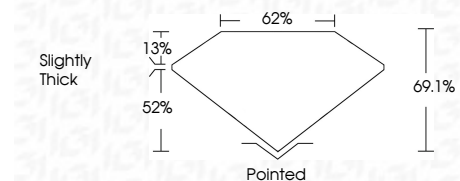
Red symbols indicate internal characteristics.
Green symbols indicate external characteristics.

COLOR

D E F G H I J Faint Very Light Light

CLARITY

IF	VS ¹⁻²	VS ¹⁻²	SI ¹⁻²	I ¹⁻³
Internally Flawless	Very Very Slightly Included	Very Slightly Included	Slightly Included	Included



ADDITIONAL GRADING INFORMATION

Polish **EXCELLENT**

Symmetry **EXCELLENT**

Fluorescence **NONE**

Inscription(s) **IGI LG652431585**

Comments: This Laboratory Grown Diamond was created by Chemical Vapor Deposition (CVD) growth process. Type IIa



IGI



September 18, 2024
IGI Report No. LG652431585
PRINCESS CUT

11.12 X 11.02 X 7.62 MM

8.52 CARATS
H

Color Grade
H

Clarity Grade
VS 2

Table
62%

Depth
69.1%

Graile
Slightly Thick

Culet
Pointed

Polish
EXCELLENT

Symmetry
EXCELLENT

Fluorescence
NONE

Inscription(s)
IGI LG652431585

Comments: This Laboratory Grown Diamond was created by Chemical Vapor Deposition (CVD) growth process. Type IIa