



ELECTRONIC COPY

LABORATORY GROWN DIAMOND REPORT

September 23, 2024	
IGI Report Number	LG652467186
Description	LABORATORY GROWN DIAMOND
Shape and Cutting Style	SQUARE CUSHION MODIFIED BRILLIANT
Measurements	8.43 X 8.20 X 5.67 MM

GRADING RESULTS

Carat Weight	3.87 CARATS
Color Grade	FANCY VIVID BROWNISH PINK
Clarity Grade	VVS 2

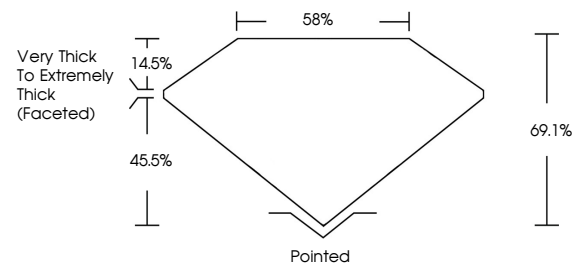
ADDITIONAL GRADING INFORMATION

Polish	EXCELLENT
Symmetry	EXCELLENT
Fluorescence	SLIGHT
Inscription(s)	 LG652467186

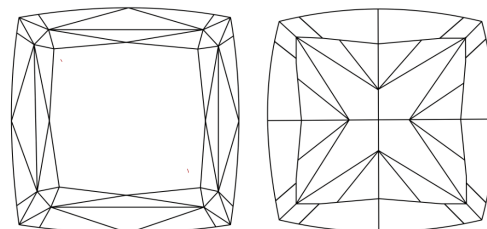
Comments: This Laboratory Grown Diamond was created by Chemical Vapor Deposition (CVD) growth process.
Indications of post-growth treatment.

LG652467186
Report verification at igi.org

PROPORTIONS

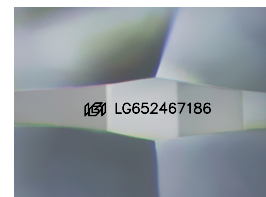


CLARITY CHARACTERISTICS



KEY TO SYMBOLS

Red symbols indicate internal characteristics.
Green symbols indicate external characteristics.



Sample Image Used

COLOR

D E F G H I J Faint Very Light Light

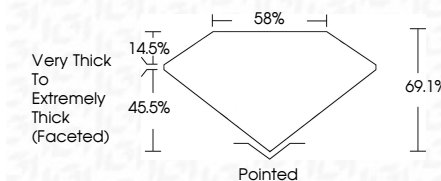
CLARITY

IF	VVS ^{1,2}	VS ^{1,2}	SI ^{1,2}	I ^{1,3}
Internally Flawless	Very Very Slightly Included	Very Slightly Included	Slightly Included	Included

LABORATORY GROWN DIAMOND REPORT



September 23, 2024	
IGI Report Number	LG652467186
Description	LABORATORY GROWN DIAMOND
Shape and Cutting Style	SQUARE CUSHION MODIFIED BRILLIANT
Measurements	8.43 X 8.20 X 5.67 MM
GRADING RESULTS	
Carat Weight	3.87 CARATS
Color Grade	FANCY VIVID BROWNISH PINK
Clarity Grade	VVS 2



ADDITIONAL GRADING INFORMATION

Polish	EXCELLENT
Symmetry	EXCELLENT
Fluorescence	SLIGHT
Inscription(s)	 LG-652467186

Comments: This Laboratory Grown Diamond was created by Chemical Vapor Deposition (CVD) growth process.
Indications of post-growth treatment.



© IGI 2020, International Gemological Institute

FD - 10 20

www.igi.org

THIS DOCUMENT WAS PRODUCED WITH THE FOLLOWING SECURITY MEASURES: SPECIAL DOCUMENT PAPER, INK SCREENS, WATERMARK, BACKGROUND DESIGNS, HOLOGRAM AND OTHER SECURITY FEATURES NOT LISTED AND DO EXCEED DOCUMENT SECURITY INDUSTRY GUIDELINE

September 23, 2024	3.87 CARATS	
GI Report No. LG56247186	FANCY VIVID BROWNISH-YELLOW	
SQUARE CUSHION MODIFIED BRILLIANT	VS 2	59%
4.3 X 3.2 X 5.67 MM	Very Thick To Extremely Thick Faceted	
	Pointed	
	EXCELLENT	
	EXCELLENT	
	SLIGHT	
	1861 LG56247186	

Comments:
 This is a Fancy Green Diamond was
 identified by Chemical Vapor Deposition
 (CVD) growth process.
 Indications of post-growth treatment.