

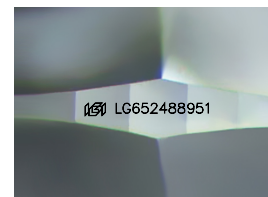
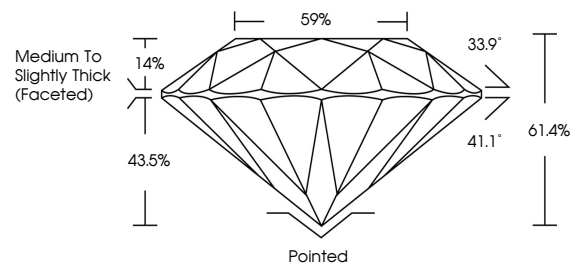


**ELECTRONIC COPY**

## LABORATORY GROWN DIAMOND REPORT

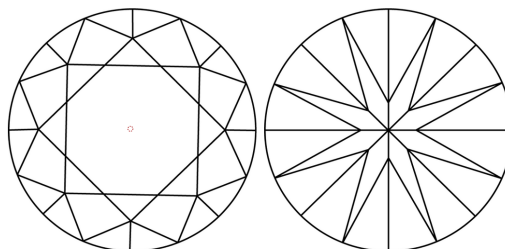
LG652488951  
Report verification at [igi.org](https://igi.org)

## PROPORTIONS



Sample Image Used

## CLARITY CHARACTERISTICS



### KEY TO SYMBOLS

Red symbols indicate internal characteristics.  
Green symbols indicate external characteristics.

## COLOR

D E F G H I J Faint Very Light Light

## CLARITY

IF	VVS <sup>1-2</sup>	VS <sup>1-2</sup>	SI <sup>1-2</sup>	I <sup>1-3</sup>
Internally Flawless	Very Very Slightly Included	Very Slightly Included	Slightly Included	Included



© IGI 2020, International Gemological Institute

FD - 10 20

**www.igi.org**

## LABORATORY GROWN DIAMOND REPORT



September 19, 2024

IGI Report Number **LG652488951**Description **LABORATORY GROWN DIAMOND**Shape and Cutting Style **ROUND BRILLIANT**

Measurements 7.57 - 7.63 X 4.67 MM

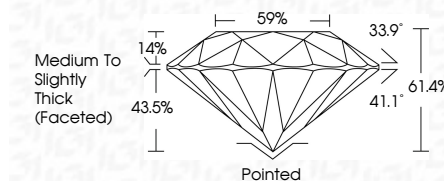
## GRADING RESULTS

Carat Weight 1.68 CARAT

Color Grade D

Clarity Grade **VS 2**

Cut Grade **IDEAL**



### ADDITIONAL GRADING INFORMATION

Polish **EXCELLENT**Symmetry **EXCELLENT**Fluorescence **NONE**Inscription(s)  LG652488951

Comments: This Laboratory Grown Diamond was created by Chemical Vapor Deposition (CVD) growth process.  
Type IIa



September 19, 2024  
IGI Report No LG65244  
ROUND BRILLIANT

7.57 - 7.63 X 4.67 MM		1.68 CARAT
Carat Weight		D
Color Grade	VVS 2	
Clarity Grade	IDEAL	
Cut Grade	61.4%	
Depth	59%	
Table	Medium to slightly Thick (facet=0)	
Grille		
Culet	Pointed	
Polish	EXCELLENT	
Symmetry	EXCELLENT	
Fluorescence	NONE	

**Comments:**  
This Laboratory Grown Diamond was created by Chemical Vapor Deposition (CVD) growth process.